

**Table 1.** Daily risk assessment disease forecasts for Thursday, Mar. 24 through Wednesday, Mar. 30, 2022\*

No.	County	Region	Anthraco- nose (date, value, level)^	Green fruit rot (date, precip., level)^	Bacterial blast risk (date, value, level)^	Bacterial spot (date, value, level)	Alternaria leaf spot
1	Butte	West	3-27 to 3-28 (0.21 to 0.09) Low risk	3-27 to 3-28 (1.63 to 3.7 mm) Low risk	0	3-27 to 3-28 (0.33 to 0.05) Low risk	Starts 4/1
2	Colusa	East	3-27 to 3-28 (0.13 to 0.07) Low- risk	3-27 to 3-28 (0.67 to 4 mm) Low risk	0	3-27 (0.06) Low risk	Starts 4/1
3	Fresno	East	3-27 to 3-28 (0.15 to 0.41) Mod. risk	3-27 to 3-28 (3.6 to 7.8 mm) Mod. risk	0	3-27 to 3-28 (0.23 to 0.8) High risk (1.03)	Starts 4/1
4	Fresno	Central	3-27 to 3-28 (0.08 to 0.09) Low- risk	3-27 to 3-28 (1.8 to 6.13 mm) Low risk	0	3-27 to 3-28 (0.09 to 0.04) Low risk	Starts 4/1
5	Fresno	West	3-28 (0.15) Low risk	3-27 to 3-28 (1.1 to 8.1 mm) Low risk	0	3-28 (0.02) Low risk	Starts 4/1
6	Kern	Central	3-28 (0.48) Mod. risk	3-27 to 3-28 (0.7 to 11.7 mm) Mod. risk	0	3-28 (0.75) High risk	Starts 4/1
7	Kern	West	3-28 (0.38) Low-Mod. risk	3-28 to 3-29 (1.4 to 14.1 mm) Mod. risk	0	3-28 (0.48) Mod. risk	Starts 4/1
8	Kern	East	0	3-28 to 3-29 (12.6 to 2.5 mm) Mod. risk	0	0	Starts 4/1
9	Stanislaus	East	3-27 to 3-28 (0.04 to 0.03) Low risk	3-27 to 3-28 (3.6 to 5.8 mm) Low risk	0	0	Starts 4/1
10	Stanislaus	Central	3-27 (0.04) Low risk	3-27 to 3-28 (2.3 to 6.0 mm) Low risk	0	0	Starts 4/1
11	Stanislaus	West	3-27 (0.09) Low risk	3-27 to 3-28 (2.2 to 7.2 mm) Low risk	0	3-27 (0.27) Low risk	Starts 4/1

\* - 7-day forecasts are based on temperature (inside- and outside-canopy measurements), precipitation, and leaf wetness which are powered by the Semios® precision farming platform.

^ - Numerical risk is scaled as follows: 0 = no risk, 1 = action threshold (Note: values may exceed 1 due to hourly accumulations).

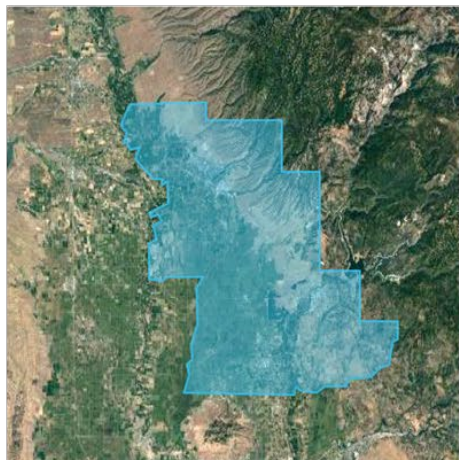
### Industry Advisory - Summary for Selected Almond Growing Regions

In the next week, precipitation is expected in all regions on 3-27 and 3-28 (-3/29) (see Table 1). With rain and moderate temperatures forecasted, bacterial spot is at a **high** risk (on susceptible cultivars such as Fritz) for Fresno-East (14.9-19.1C) and Kern-Central (13.5-18.7C) and a moderate risk for Kern-West (12.2-17.4C); whereas the risk for bacterial blast is zero for all regions. Risk for anthracnose is low to moderate (susceptible varieties such as Monterey, Carmel, Mission) for Fresno-East, Kern-Central, and Kern-West. Overall, forecasted accumulated precipitation ranging from 11.4 mm (Fresno-East) to 15.5 mm (Kern-West) and moderate average daily temperatures ranging from 12.2 to 19.1C across the central to southern regions favor the initiation of bacterial spot, anthracnose, and green fruit rot in these counties, as well as green fruit rot in Kern-East. Green fruit rot is favored on varieties with heavy fruit sets that may have infected flower parts lodged between rapidly enlarging fruit. Wetness allows for *Botrytis cinerea* and other fungi to grow from decaying flower parts into healthy fruit. Other regions with lower accumulated precipitation (<10 mm) are shown as low risk for anthracnose, bacterial spot, and green fruit rot. Forecasts are based on regional maps shown in Figs. 1,2 that correspond to the regions described in Table 1. The website <https://www.ag-radar.com> (password: Almondboard2022) displays actual and forecasted disease risk assessments for each region. Because these are regional forecasts, precipitation may vary with region and differ for the forecasted rainfall. Please check <https://www.ag-radar.com> for up to date daily forecasts. Historical records and experience for specific locations should be considered. This advisory will be updated weekly.

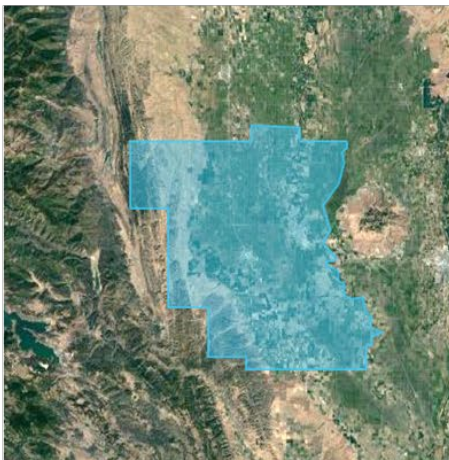
"2022 Fungicide Efficacy Tables" (<http://ipm.ucanr.edu/PDF/PMG/fungicideefficacytiming.pdf>) were posted on 3-21-22.

Fig. 1. Maps of counties and regions.

Butte West



Colusa East



Fresno Central



Fresno East



Fresno West



Fig. 2. Maps of counties and regions.

Kern West



Kern East



Kern Central



Stanislaus Central



Stanislaus East



Stanislaus West

