

**Table 1.** Daily risk assessment disease forecasts for Thursday, April 21 through Wednesday, April 27, 2022\*

No.	County	Region	Anthracnose (date, value, level)^	Bacterial spot (date, value, level)	Alternaria leaf spot (date, value, level)^
1	Butte	West	0	0	4-24/25 (1+1) Low risk
2	Colusa	East	4-21 (0.09) Low risk	4-21 (0.06) Low risk	4-24 (1) Low risk
3	Fresno	East	4-21 (0.08) Low risk	4-21 (0.07) Low risk	0
4	Fresno	Central	4-21 (0.1) Low risk	4-21 (0.16) Low risk	0
5	Fresno	West	4-21 (0.04) Low risk	4-21 (0.01) Low risk	0
6	Kern	Central	0	0	0
7	Kern	West	0	0	0
8	Kern	East	4-21 (0.03) Low risk	0	0
9	Madera	Central	4-21 (0.29) Low risk	4-21 (0.72) Moderate risk	0
10	Merced	Central	4-21 (0.19) Low risk	4-21 (0.27) Low risk	0
11	Stanislaus	East	4-21 (0.06) Low risk	0	0
12	Stanislaus	Central	4-21 (0.03) Low risk	0	0
13	Stanislaus	West	4-21 (0.03) Low risk	0	0

\* - 7-day forecasts are based on temperature (inside- and outside-canopy measurements), precipitation, and leaf wetness which are powered by the Semios® precision farming platform.

^ - Numerical risk is scaled as follows: 0 = no risk, 1 = action threshold (Note: values may exceed 1 due to hourly accumulations).

### Industry Advisory - Summary for Selected Almond Growing Regions

For the coming week, low risk is forecasted for anthracnose on 4/21/22 in all regions except Butte-W, Kern-C, and Kern-W where the risk is zero. A moderate risk is forecasted for Madera-C (4-21, 0.72), and low to zero risk for bacterial spot in all other regions. Low risk is forecasted for Alternaria leaf spot in Butte-W and Colusa-E, whereas other regions have a zero risk forecasted (Table 1). Overall, the forecasts are subjected to the amount and duration of precipitation leading to leaf wetness and realized temperatures.

### Industry Advisory – Last week’s comparison of forecasted and actual risks

Table 2 shows the overall comparison of forecasted and actual disease risks and demonstrates the overall accuracy for the three disease forecasts for the week of 4-14 to 4-20-22. The accuracy of forecasts was determined for the total correct matches for each disease and region: 10 of 13 correct matches for anthracnose (77% accuracy); 10 of 13 correct matches for bacterial spot (77% accuracy); and 13 of 13 correct matches for Alternaria leaf spot (100% accuracy). Average for all three diseases is 85% across all regions.

The website <https://www.ag-radar.com> (password: Almondboard2022) displays actual and forecasted disease risk assessments for each region. Because these are regional forecasts, precipitation may vary with region and differ for the forecasted rainfall. Please check <https://www.ag-radar.com> for up to date daily forecasts. Historical records and experience for specific locations should be considered. This advisory will be updated weekly.

"2022 Fungicide Efficacy Tables" (<http://ipm.ucanr.edu/PDF/PMG/fungicideefficacytiming.pdf>) were posted on 3-21-22.

**Table 2.** Comparison of forecasted and actual disease risk with overall accuracy of forecasts for Thursday, April 14 through Wednesday, April 20, 2022\*

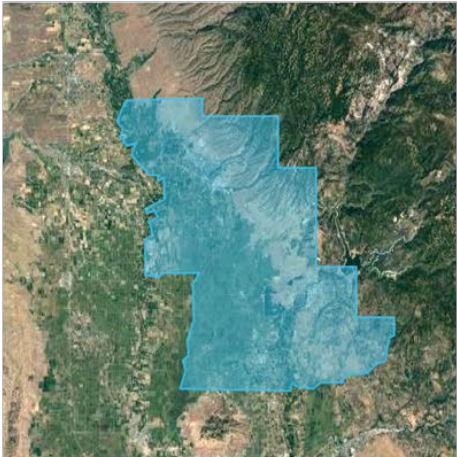
No.	County	Region	Anthracnose risk		Bacterial spot risk		Alternaria leaf spot risk	
			Forecasted (date, value, level) <sup>^</sup>	Actual (date, value, level, 5-day index)	Forecasted (date, value, level)	Actual (date, value, level, 7-day index)	Forecasted (date, value, level) <sup>^</sup>	Actual (date, value, level, 7-day index)
1	Butte	West	4-15, 4-16, 4-18 (0.18, 0.19, 0.23) Moderate risk	0	4-15, 4-16, 4-18 (0.31, 0.16, 0.41) High risk	Low risk	4-20 (1) Low risk	Low risk
2	Colusa	East	Low risk	Low risk	0	0	0	0
3	Fresno	East	Low risk	Low risk	0	0	0	0
4	Fresno	Central	Low risk	Low risk	0	0	0	0
5	Fresno	West	Low risk	Low risk	0	0	0	0
6	Kern	Central	0	0	0	0	0	0
7	Kern	West	0	4-16, 4-17, 4-20 (2.08, 0.1, 0.28), H, L, L (5-day index =high)	0	4-16, 4-17, 4-20 (4.59, 0.32, 0.74), H, L, M (7-day index =high)	0	0
8	Kern	East	0	0	0	0	0	0
9	Madera	Central	Low risk	Low risk	0	0	0	0
10	Merced	Central	Low risk	Low risk	0	0	0	0
11	Stanislaus	East	Low risk	4-15, 4-16 (0.12, 0.12), L, L (5-day index =low)	0	0	0	0
12	Stanislaus	Central	0	4-16, 4-19 (0.49, 0.16), M, L (5-day index =moderate)	0	4-16, 4-19 (1.25, 0.4), H, M (5-day index =high)	0	0
13	Stanislaus	West	Low risk	Low risk	0	0	0	0
Accuracy of forecasts			Comparison:	10 of 13 correct	Comparison:	10 out of 13 correct	Comparison:	13 out of 13 correct

\* - 7-day forecasts are based on temperature (inside- and outside-canopy measurements), precipitation, and leaf wetness which are powered by the Semios<sup>®</sup> precision farming platform.

<sup>^</sup> - Numerical risk is scaled as follows: 0 = no risk, 1 = action threshold (Note: values may exceed 1 due to hourly accumulations).

Fig. 1. Maps of counties and regions.

Butte West



Colusa East



Fresno Central



Fresno East



Fresno West



Fig. 2. Maps of counties and regions.

Kern West



Kern East



Kern Central



Stanislaus Central



Stanislaus East



Stanislaus West

