

Almond Board of California - Disease Forecasts in cooperation with the University of California

Table 1. Daily risk assessment disease forecasts for Thursday, April 28 through Wednesday, May 4, 2022*

No.	County	Region	Anthraco-nose (date, value, level), 5-day index summary (risk)^	Bacterial spot (date, value, level), 7-day index summary (risk)^	Alternaria leaf spot (date, value, level), 7-day index summary (risk)^
1	Butte	West	0	0	0
2	Colusa	East	0	0	0
3	Fresno	Central	0	0	0
4	Fresno	East	0	0	0
5	Fresno	West	0	0	0
6	Kern	Central	0	0	0
7	Kern	East	0	0	0
8	Kern	West	0, Low risk; 5-day index decreasing from 2.36 to 0 (High to Low risk for 4-28 to 5-1)	0, Low risk; 7-day index decreasing from 3.4 to 1 (High risk for 4-28 to 5-1)	0
9	Madera	Central	0	0	0
10	Merced	Central	0	0	0
11	Stanislaus	Central	0	0	0
12	Stanislaus	East	0	0	0
13	Stanislaus	West	0	0	0

* - 7-day forecasts are based on temperature (inside- and outside-canopy measurements), precipitation, and leaf wetness which are powered by the Semios® precision farming platform.

^ - Numerical risk is scaled as follows: 0 = no risk, 1 = action threshold (Note: values may exceed 1 due to hourly accumulations).

Note: In this updated table, the order of some regions was changed from previous reports to match the RADAR on-line report and to minimize errors in the summary table.

Industry Advisory - Summary for Selected Almond Growing Regions

For the coming week, zero risk is forecasted for Alternaria leaf spot, anthracnose, and bacterial spot in all regions except Kern-W. In Kern-W, the daily risk for anthracnose is low (0) from 4-28 to 5-4, and the 5-day index is decreasing from 2.36 to 0 (high to low risk) over the next week (Table 1). The daily risk for bacterial spot, especially on cv. Fritz, is low (0) from 4-28 to 5-4 in Kern-W. The 7-day index is decreasing from 3.4 to 1 (high risk) for most of the coming week. This is due to the favorable environments last week for this specific region that carry over to the coming week. Repeated rain events are needed to initiate epidemics for these two diseases, and thus, disease management practices should be in place in Kern-W. Overall, the forecasts are subjected to the amount and duration of precipitation (leading to leaf wetness) and realized temperatures. Forecasted temperatures are remaining relatively cool to warm (13.7 to 30.7C) in all regions. Most will not have precipitation except Kern-W with 0.51 mm forecasted for the next week, indicating that the overall disease pressure will be low in most almond growing regions of the state (Table 2).

The website <https://www.ag-radar.com> (password: Almondboard2022) displays actual and forecasted disease risk assessments for each region. Because these are regional forecasts, precipitation may vary with region and differ for the forecasted rainfall. Please check <https://www.ag-radar.com> for up to date daily forecasts. Historical records and experience for specific locations should be considered. This advisory will be updated weekly.

"2022 Fungicide Efficacy Tables" (<http://ipm.ucanr.edu/PDF/PMG/fungicideefficacytiming.pdf>) were posted on 3-21-22.

Note: Maps for all regions listed in Tables 1 and 2 are provided in Figs. 1 to 3.

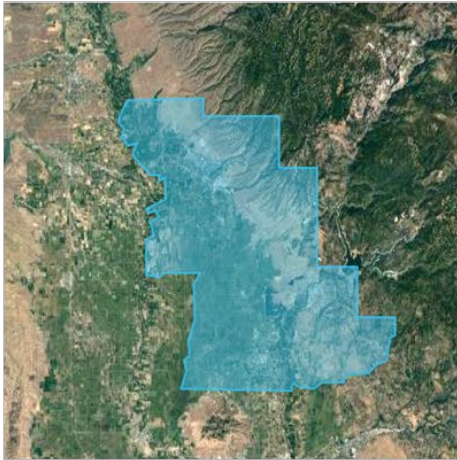
Table 2. Forecasted weather for Thursday, April 28 through Wednesday, May 4, 2022*

No.	County	Region	Date	Avg Temp (in canopy) °C	Avg Humidity (%)	Precip. (mm)	Leaf Wetness (%) (4-28 only)
1	Butte	West	4-28 to 5-4	15.5 to 26.4	52.5 to 26.6	0	0
2	Colusa	East	4-28 to 5-4	15.1 to 25.4	53.5 to 28.1	0	0.1
3	Fresno	Central	4-28 to 5-4	16.3 to 21.7	47.3 to 29.9	0	0
4	Fresno	East	4-28 to 5-4	17.5 to 21.8	44.3 to 31.5	0	0
5	Fresno	West	4-28 to 5-4	16.1 to 22.5	38.7 to 25.7	0	0.1
6	Kern	Central	4-28 to 5-4	14.4 to 30.7	49 to 30.7	0	0.1
7	Kern	East	4-28 to 5-4	14.8 to 21.8	48.2 to 30.6	0	0.1
8	Kern	West	4-28 to 5-4	15.4 to 21	40.8 to 29.5	0.51	0.1
9	Madera	Central	4-28 to 5-4	14.9 to 21	51.7 to 33.1	0	0.1
10	Merced	Central	4-28 to 5-4	15.4 to 21.1	53.3 to 33.6	0	0.1
11	Stanislaus	Central	4-28 to 5-4	14.5 to 21.4	54.6 to 34.2	0	0.1
12	Stanislaus	East	4-28 to 5-4	13.7 to 21.2	61.7to 35.6	0	0.2
13	Stanislaus	West	4-28 to 5-4	14.2 to 22	52.6 to 30.5	0	0.2

Note: In this table, the order of some regions is the same as table 1 and was generated using the RADAR on-line forecasted report powered by the Semios® precision farming platform.

Fig. 1. Maps of counties and regions (alphabetically listed).

Butte West



Colusa East



Fresno Central



Fresno East



Fresno West



Fig. 2. Maps of counties and regions (alphabetically listed).

Kern Central



Kern East



Kern West



Madera Central



Fig. 3. Maps of counties and regions (alphabetically listed).

Merced Central



Stanislaus Central



Stanislaus East



Stanislaus West

