

**Table 1.** Daily risk assessment disease forecasts for Thursday, April 7 through Wednesday, April 13, 2022\*

No.	County	Region	Anthracnose (date, value, level) <sup>^</sup>	Green fruit rot (date, precip., level) <sup>^</sup>	Bacterial spot (date, value, level)	Alternaria leaf spot (date, value, level) <sup>^</sup>
1	Butte	West	4-11 (0.43) Moderate risk	4-11 (0.7 mm) Low risk	4-11 (1.2) High risk	0
2	Colusa	East	4-11 (0.2) Low risk	4-11 (0.4 mm) Low risk	4-11 (0.25) Low risk	0
3	Fresno	East	4-11 (0.67) Moderate risk	4-11 (3.11 mm) Low risk	4-11 (1.88) Moderate risk	0
4	Fresno	Central	4-11 (0.5) Moderate risk	4-11 (0.87 mm) Low risk	4-11 (1.44) High risk	0
5	Fresno	West	0	0	0	0
6	Kern	Central	0	4-11 (0.92 mm) Low risk	0	0
7	Kern	West	0	0	0	0
8	Kern	East	0	4-11/12 (1.56 + 2.2 mm) Low risk	0	0
9	Madera	Central	4-11 (0.36) Low risk	4-11 (2.17 mm) Low risk	4-11 (0.87) High risk	0
10	Merced	Central	4-11 (0.3) Low risk	4-11 (2 mm) Low risk	4-11 (0.38) Low risk	0
11	Stanislaus	East	4-11 (0.06) Very low risk	4-11 (3.84 mm) Low risk	0	0
12	Stanislaus	Central	4-11 (0.16) Very low risk	4-11 (1.58 mm) Low risk	4-11 (0.08) Very low risk	0
13	Stanislaus	West	4-11 (0.23) Low risk	4-11 (0.6 mm) Low risk	4-11 (0.1) Very low risk	0

\* - 7-day forecasts are based on temperature (inside- and outside-canopy measurements), precipitation, and leaf wetness which are powered by the Semios<sup>®</sup> precision farming platform.

<sup>^</sup> - Numerical risk is scaled as follows: 0 = no risk, 1 = action threshold (Note: values may exceed 1 due to hourly accumulations).

### Industry Advisory - Summary for Selected Almond Growing Regions

Very little or no precipitation occurred in all regions last week, and rainfall in the coming week is predicted to be mostly low as well. Several regions, however, including Fresno-E, Kern-E, and Stanislaus-E will receive between 3.11 mm (0.012 in) and 3.84 mm (0.015 in) rainfall on 4-11 (and 4-12 in Kern-E). This may provide enough wetness for *Botrytis cinerea* and other fungi to grow from decaying flower parts into healthy fruit, resulting in low risk levels for green fruit rot in cultivars with high fruit set. Most cultivars have shed their old blossom parts and thus, the risk is low for this disease.

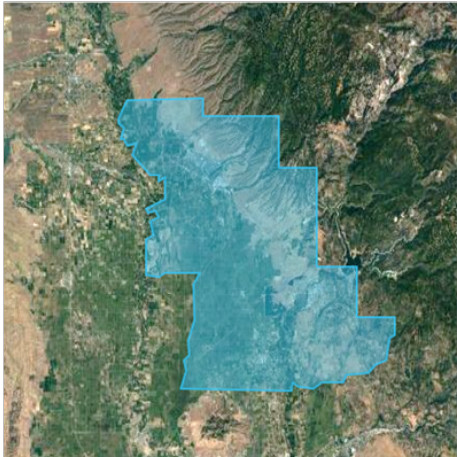
Temperatures were at threshold levels for bacterial spot and anthracnose. The risk is low to moderate for anthracnose because this disease needs repeated rains for sporulation, dissemination, germination, and infection. Bacterial spot is at high-risk in Butte-West, Fresno-Central, and Madera-Central on susceptible cultivars such as Fritz where rainfall and warming temperatures could result in an infection period. The use of mancozeb will not be available soon since the 5-weeks-after-petal-fall limit is approaching.

The risk for Alternaria leaf spot is zero for all regions because low or no precipitation or leaf wetness and moderate temperatures are forecasted in the coming week (see Table 1). The website <https://www.ag-radar.com> (password: Almondboard2022) displays actual and forecasted disease risk assessments for each region. Because these are regional forecasts, precipitation may vary with region and differ for the forecasted rainfall. Please check <https://www.ag-radar.com> for up to date daily forecasts. Historical records and experience for specific locations should be considered. This advisory will be updated weekly.

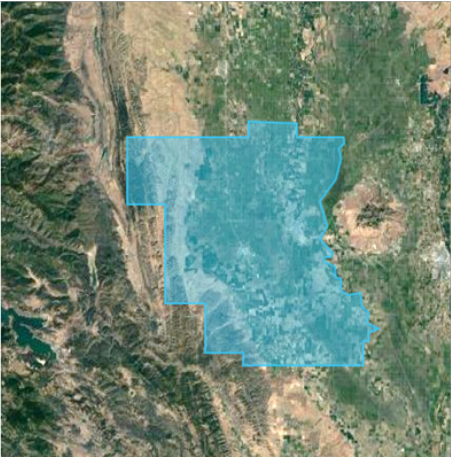
"2022 Fungicide Efficacy Tables" (<http://ipm.ucanr.edu/PDF/PMG/fungicideefficacytiming.pdf>) were posted on 3-21-22.

Fig. 1. Maps of counties and regions.

Butte West



Colusa East



Fresno Central



Fresno East



Fresno West



Fig. 2. Maps of counties and regions.

Kern West



Kern East



Kern Central



Stanislaus Central



Stanislaus East



Stanislaus West

