

**Table 1.** Daily risk assessment disease forecasts for Thursday, June 30 through Wednesday, July 07, 2022\*

No.	County	Region	Alternaria leaf spot (date, value, level), 7-day index summary (risk)^	Anthrachnose (date, value, level), 5-day index summary (risk)^	Bacterial spot (date, value, level), 7-day index summary (risk)^
1	Butte	West	0	0	0
2	Colusa	East	0	0	0
3	Fresno	Central	0	0	0
4	Fresno	East	0	0	0
5	Fresno	West	0	0	0
6	Kern	Central	0	0	0
7	Kern	East	0	0, High risk with 5-day index 5.28 holding at 0 from 6-29 to 7-03	0
8	Kern	West	0	6-30 (2.85), High risk with 5-day index 5.28 holding at 2.85	0
9	Madera	Central	0	0	0
10	Merced	Central	0	0	0
11	Stanislaus	Central	0	0	0
12	Stanislaus	East	0	0	0
13	Stanislaus	West	0	0	0

\* - 5- and 7-day forecasts are based on temperature (inside- and outside-canopy measurements), precipitation, and leaf wetness which are powered by the Semios® precision farming platform.

^ - Numerical risk is scaled as follows: 0 = no risk, 1 = action threshold (Note: values may exceed 1 due to hourly accumulations).

Note: In this updated table, the order of some regions was changed from previous reports to match the RADAR on-line report and to minimize errors in the summary table.

**Industry Advisory - Summary for Selected Almond Growing Regions**

For all regions, the risk for Alternaria leaf spot and bacterial spot is zero. Because precipitation occurred on 6-29 in Kern-E (0.03 mm) and Kern-W (0.15 mm), the model for anthracnose indicated high risk for these locations. Without repeated rainfall or extended high precipitation, however, the risk of anthracnose is low. All other locations are at 0 risk for anthracnose. Precipitation is only forecasted for Kern-W on 6-30 (0.15 mm). The low amounts of rainfall that are occurring are negligible for the anthracnose pathosystem that requires high precipitation for sporulation, dissemination, spore germination, and infection of almond tissues to occur.

Overall, the forecasts are subjected to the amount and duration of precipitation (leading to leaf wetness) and realized temperatures. Forecasted temperatures are moderate in the coming week (19.4 to 28.6 C) across all regions (Table 2). Without precipitation and leaf wetness, these temperatures will not result in high pressure of the three diseases. Overall, disease pressure will decrease in the coming week (Table 1). In summary, continue to scout the orchards especially if rainfall occurs. With the beginning of hull split eminent in the next week or two, hull rot fungicide applications can be planned for in combination with the NOW applications at 1% hull split followed by a second application two weeks later under windy and dusty conditions. Under low favorable conditions, a single, delayed application at 10-20% hull rot at the last NOW application should be sufficient. Consult the 2022 Fungicide Efficacy Tables and your PCA for the best strategy.

The website <https://www.ag-radar.com> (password: Almondboard2022) displays actual and forecasted disease risk assessments for each region. Because these are regional forecasts, precipitation may vary with region and differ for the forecasted rainfall. Please check <https://www.ag-radar.com> for up to date daily forecasts. Historical records and experience for specific locations should be considered. Note: The "2022 Fungicide Efficacy Tables" were posted at <http://ipm.ucanr.edu/PDF/PMG/fungicideefficacytiming.pdf> on 3-21-22 and at <https://cfn-fungicides.ucr.edu/efficacy-tables> on 5-1-22.

Note: Maps for all regions listed in Tables 1 and 2 are provided in Figs. 1 to 3.

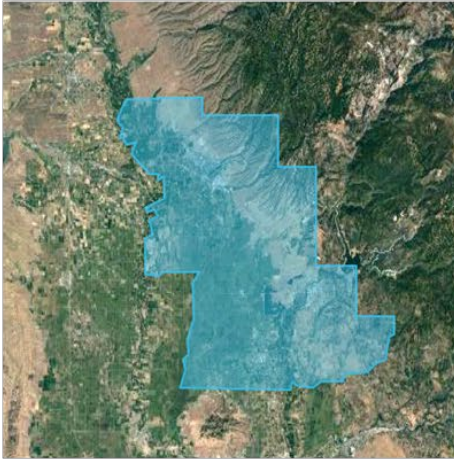
**Table 2.** Forecasted weather for Thursday, June 30 through Wednesday, July 07, 2022\*

No.	County	Region	Avg Temp (in canopy) °C	Avg Humidity (%)	Precip. (mm)	Leaf Wetness (hours/day)
1	Butte	West	21.0 to 26.1	36.6 to 56.9	0	0
2	Colusa	East	22.0 to 23.9	46.0 to 58.4	0	0
3	Fresno	Central	23.1 to 26.5	39.6 to 51.8	0	0
4	Fresno	East	23.0 to 26.5	42.1 to 50.8	0	0
5	Fresno	West	22.4 to 26.6	27.6 to 49.7	0	0
6	Kern	Central	23.1 to 25.5	29.7 to 45.7	0	0
7	Kern	East	24.3 to 28.6	24.5 to 46.7	6-29 (0.03)	0
8	Kern	West	23.1 to 26.5	28.2 to 50.6	6-30 (0.15)	0
9	Madera	Central	21.7 to 25.6	42.4 to 55.8	0	0
10	Merced	Central	21.2 to 25.6	44.1 to 55.3	0	0
11	Stanislaus	Central	19.4 to 24.1	46.6 to 57.5	0	0
12	Stanislaus	East	19.9 to 24.4	46.6 to 56.1	0	0
13	Stanislaus	West	20.1 to 24.3	42.8 to 58.3	0	0

**Note:** In this table, the order of regions is the same as Table 1 and was generated using the RADAR on-line forecasted report powered by the Semios® precision farming platform. The ranges of average temperatures, relative humidity values, precipitation, and leaf wetness are not sequential with dates, but the high and low values are within the forecasted week.

Fig. 1. Maps of counties and regions (alphabetically listed).

Butte West



Colusa East



Fresno Central



Fresno East



Fresno West



Fig. 2. Maps of counties and regions (alphabetically listed).

Kern Central



Kern East



Kern West



Madera Central



Fig. 3. Maps of counties and regions (alphabetically listed).

Merced Central



Stanislaus Central



Stanislaus East



Stanislaus West

