

THE ALMOND CONFERENCE

50

YEARS

THANK YOU TO THE ALMOND CONFERENCE 2022 METAL SPONSORS!



CEU INSTRUCTIONS: HOW TO RECEIVE CREDIT

VIA QR CODES

1. **Separate QR codes will be provided** at the start and end of each session. Participants will scan QR code with their smart phones where their check-in/out times are recorded and will provide their information.
2. **The QR codes can be found on the stands at the entrance** of each session.
3. **The check-in QR codes will be pinned 10 minutes** before the session starts and available until 10 minutes after the presentation has started. The check-in QR code will be removed after 10 minutes into the session to prevent late attendees from checking in.
4. **The checkout QR codes will be provided 5 minutes** before the session is scheduled to end, and available for 15 minutes afterwards before being removed.

VIA ATTENDANCE BOOTH

1. **A staff member will be present** at the attendance booth to help assist participants who are unable to use the QR code.
2. **Attendees will check in before the session starts** and check out after the session is over by filling out a copy of the check-in/out form.
3. **Attendees will provide** name, email address, license type and number, and credit type that they wish to receive.
4. **The same policy will apply** as above for check-in and checkout times.

MONITORING

One to two Almond Board staff members will be present at each session for monitoring attendance. Staff will monitor any attendees who leave at any point during session. They will remind these attendees of their credit being denied and won't allow them to checkout at the end of the session.

CERTIFICATES

- **Attendance information will be tracked** and compiled after the sessions.
- **Course Completion Certificates will only be provided** to attendees that were present for the entire duration of each session.
- **Course Completion Certificates will be emailed** to attendees within 14 days after the conclusion of the conference.
- **No partial credits** will be offered.
- **No print certificates** will be provided. Certificates will be emailed shortly after The Almond Conference.



We Want to Hear from You!

The Almond Board is conducting research to understand your experiences, perceptions and needs/wants of The Almond Conference. This information will improve future conferences. During the conference, we'll conduct several focus group sessions and short individual interviews.

Focus Group Sessions

These will be in Room 15 (Level 2—across from Ballroom B-5) during the following times:

Wednesday, December 7, 2022

- 9:30–10:30 a.m.
- 11:45 a.m.–12:45 p.m.
- 4:00–5:00 p.m.

Thursday, December 8, 2022

- 10:30–11:30 a.m.

If you are interested in being a part of the focus group, please use this QR code to select a time!



Short Individual Interviews

Throughout the conference, Vivayic, the research organization, will also ask select attendees about their conference experiences.

Vivayic will have a neon yellow ribbon on their name badges that says, **“Tell me more.”**

Please take a few moments to provide your insights if asked.



OPENING RECEPTION

Sponsored by Alzchem LLC



SNACKS

Sponsored by Wilbur-Ellis



WILBUR-ELLIS
AGRIBUSINESS

3:30 – 5:00 p.m.

Almond Conference Expo

STATE OF THE INDUSTRY

Tuesday, December 6
2:00 – 3:30 p.m.
Ballroom A



THE ALMOND CONFERENCE

50

YEARS

A graphic celebrating the 50th anniversary of The Almond Conference. It features a large, bold, gold-colored number '50' in the center. Above the '50' is the text 'THE ALMOND CONFERENCE' and below it is 'YEARS'. The entire graphic is set against a dark, textured background with a subtle pattern of almond nuts. Some almonds are scattered on the surface around the graphic, and a bowl filled with almonds is visible in the upper right corner.

THE ALMOND CONFERENCE

50
YEARS

Creative Approaches to Managing Limited Water

December 6, 2022

Moderator: Jesse Roseman (ABC)

Speakers: David Guy (Northern California Water Association)

Stephanie Anagnoson (Madera County)

Daniel Mountjoy (Sustainable Conservation)

Mark Hutson (Farmer)

Stuart Woolf (Woolf Farming)

 **california
almonds**
Almond Board of California

Almond Board of California

December 6, 2022

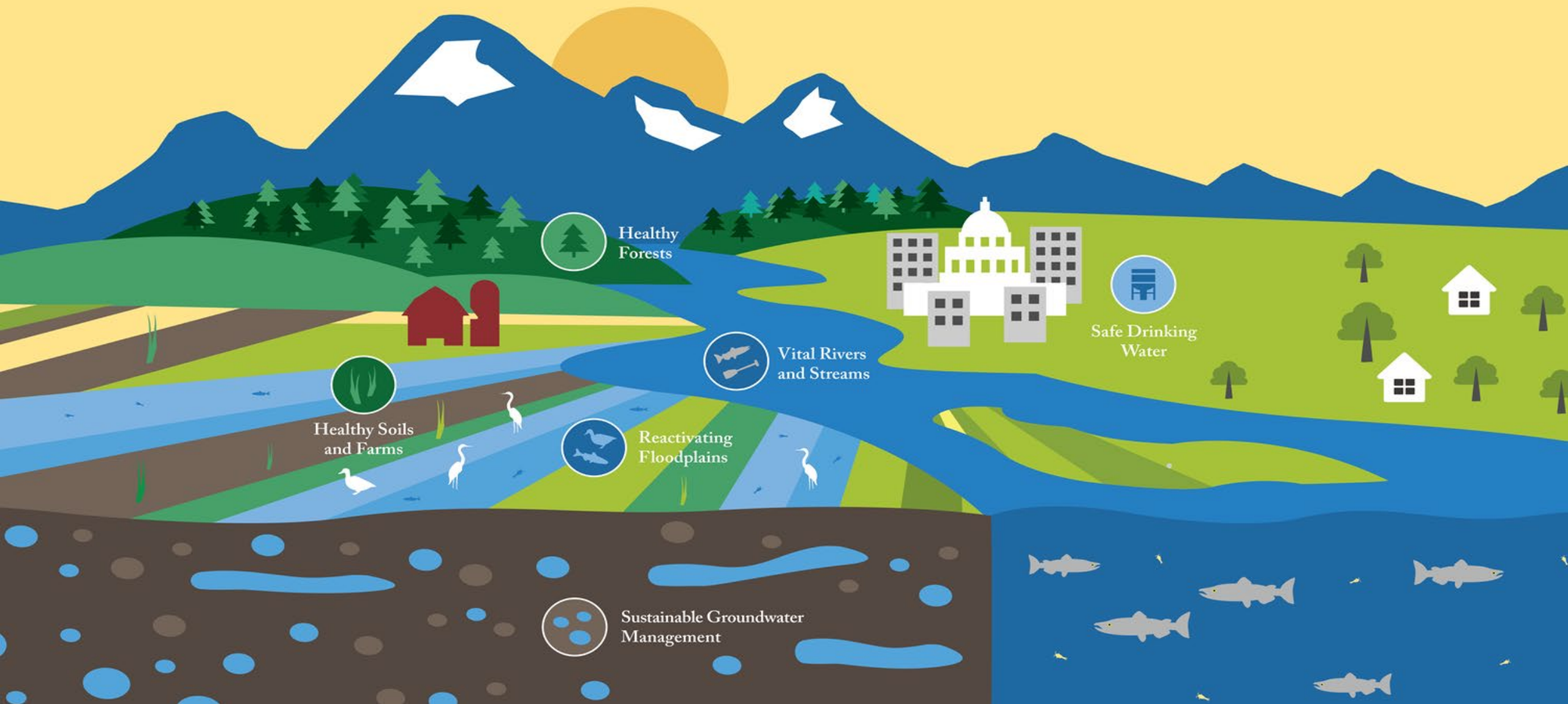


Sacramento Valley

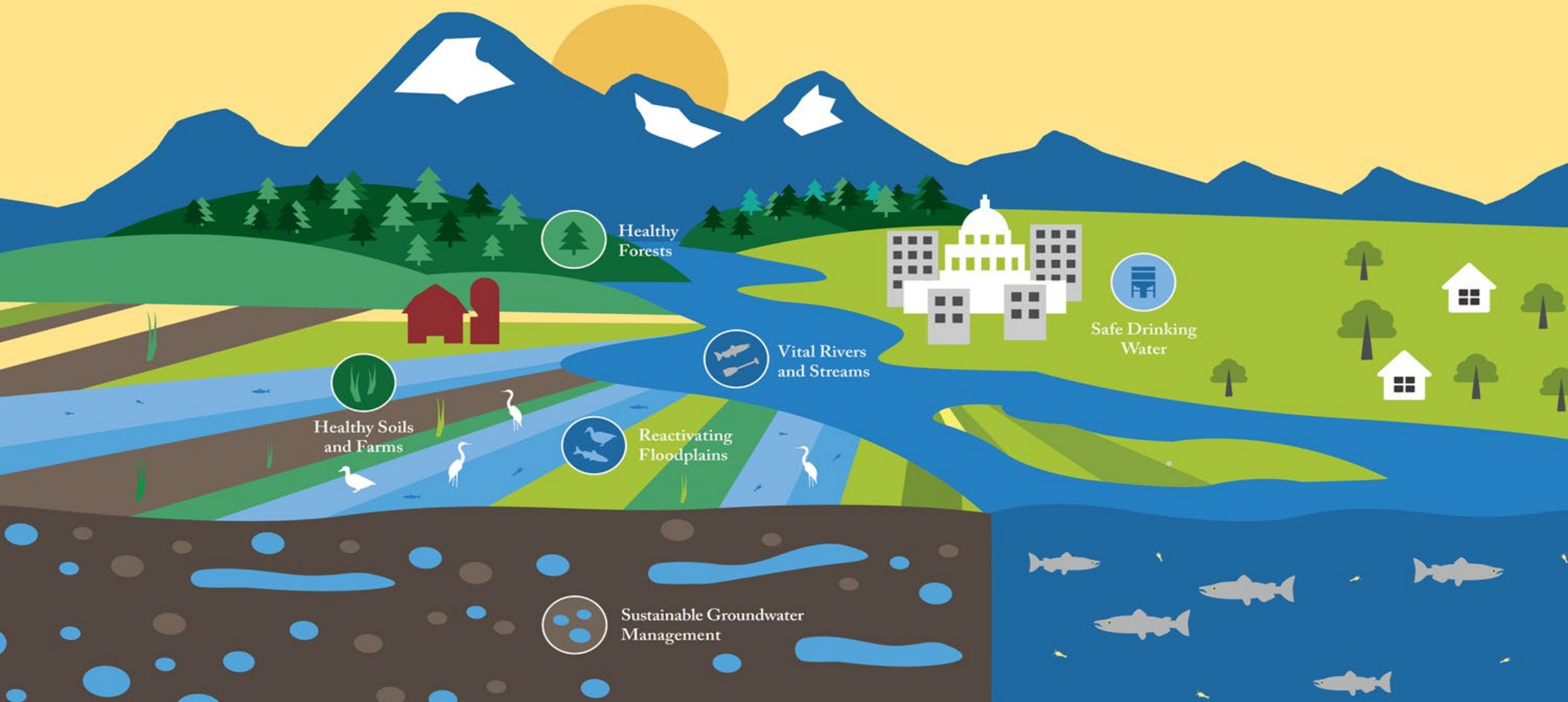
A truly unique and exceptional place



Ridgetop to River Mouth Water Management



A Functional Sacramento Valley Depends on a Healthy Landscape



Healthy Forests

Healthy Soils and Farms

Vital Rivers and Streams

Reactivating Floodplains

Safe Drinking Water

Sustainable Groundwater Management

2022



2023 IOP

“From the date of this Order through December 31, 2023, SWP and CVP operations shall comply, as consistent with applicable law, with the interim operations set forth below in Paragraphs 10 through 16, as applicable to water year type, should the water year type be classified as Critical, Dry, or Below Normal for Water Year 2023.”

1 TODD KIM, Assistant Attorney General
S. JAY GOVINDAN, Acting Section Chief
2 U.S. Department of Justice
Environment & Natural Resources Division
3 NICOLE M. SMITH, Senior Trial Attorney (CA Bar No. 303629)
CLIFFORD E. STEVENS, JR., Senior Trial Attorney (DC Bar No. 463906)
4 150 M St. NE, Washington, D.C. 20002
Tel: (202) 305-0368 (Smith); Tel: (202) 353-7548 (Stevens)
5 LESLEY LAWRENCE-HAMMER, Senior Trial Attorney (DC Bar No. 982196)
EVE W. MCDONALD, Trial Attorney (CO Bar No. 26304)
6 999 18th Street, South Terrace – Suite 370, Denver, CO 80202
Tel: (303) 844-1368 (Lawrence-Hammer); Tel: (303) 844-1381 (McDonald)
7
8 *Attorneys for Federal Defendants*

9
10 **UNITED STATES DISTRICT COURT
FOR THE EASTERN DISTRICT OF CALIFORNIA**

11 PACIFIC COAST FEDERATION OF
12 FISHERMEN'S ASSOCIATIONS, et al.,
Plaintiffs,

13 v.

14 GINA RAIMONDO, in her official
capacity as Secretary of Commerce, et
al.,

15 Defendants.

16
17 THE CALIFORNIA NATURAL
RESOURCES AGENCY, et al.,
18 Plaintiffs,

19 v.

20 GINA RAIMONDO, et al.,
21 Defendants.

Case No. 1:20-cv-00431-JLT-EPG
Case No. 1:20-cv-00426-JLT-EPG

[PROPOSED] ORDER

22
23
24
25
26
27
28
[Proposed Order]
Case Nos. 1:20-cv-00431-JLT-EPG; 1:20-cv-00426-JLT-EPG

Governor's Water Supply Strategy

AUG 2022 **CALIFORNIA'S WATER SUPPLY STRATEGY**
Adapting to a Hotter, Drier Future

California
NATURAL RESOURCES
AGENCY

Water Boards

CalEPA
California Environmental
Protection Agency

cdfa
CALIFORNIA DEPARTMENT OF
FOOD & AGRICULTURE

**A PATHWAY FOR THE FUTURE:
Sustainable Groundwater Management
in the Sacramento Valley**



March 2022



1.

The Foundation: Groundwater Sustainability Plans (GSPs)



2.

Looking to the Future: Implementation

- 💧 Ensure safe drinking water for communities
- 💧 Advance groundwater recharge opportunities
- 💧 Better understand and manage surface water and groundwater interaction
- 💧 Align state and federal priorities with local and regional needs
- 💧 Coordinate well permitting across region





3.

Regional Coordination

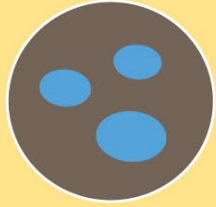
Groundwater Management Task Force

GSA Managers/Consultants





Reactivating
Floodplains



Sustainable Groundwater
Management



Healthy
Forests



Healthy Soils
and Farms

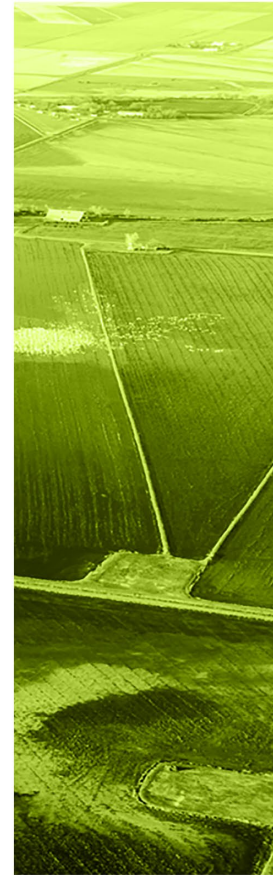
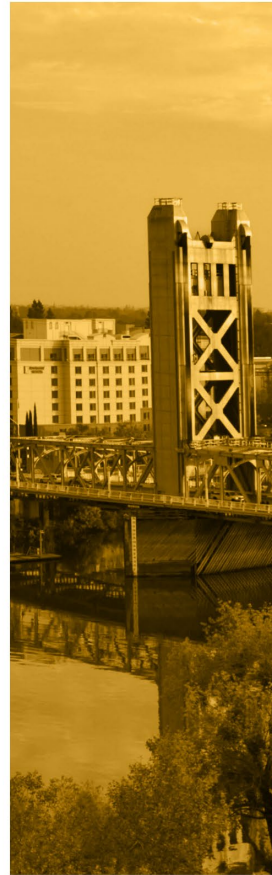


Safe Drinking
Water



Vital Rivers and
Streams

HEALTHY RIVERS CALIFORNIA





**Cultivate a shared vision in the
Sacramento Valley for a vibrant way of
life**

THE ALMOND CONFERENCE

50
YEARS

Creative Approaches to Managing Water

December 6, 2022 / Stephanie Anagnoson

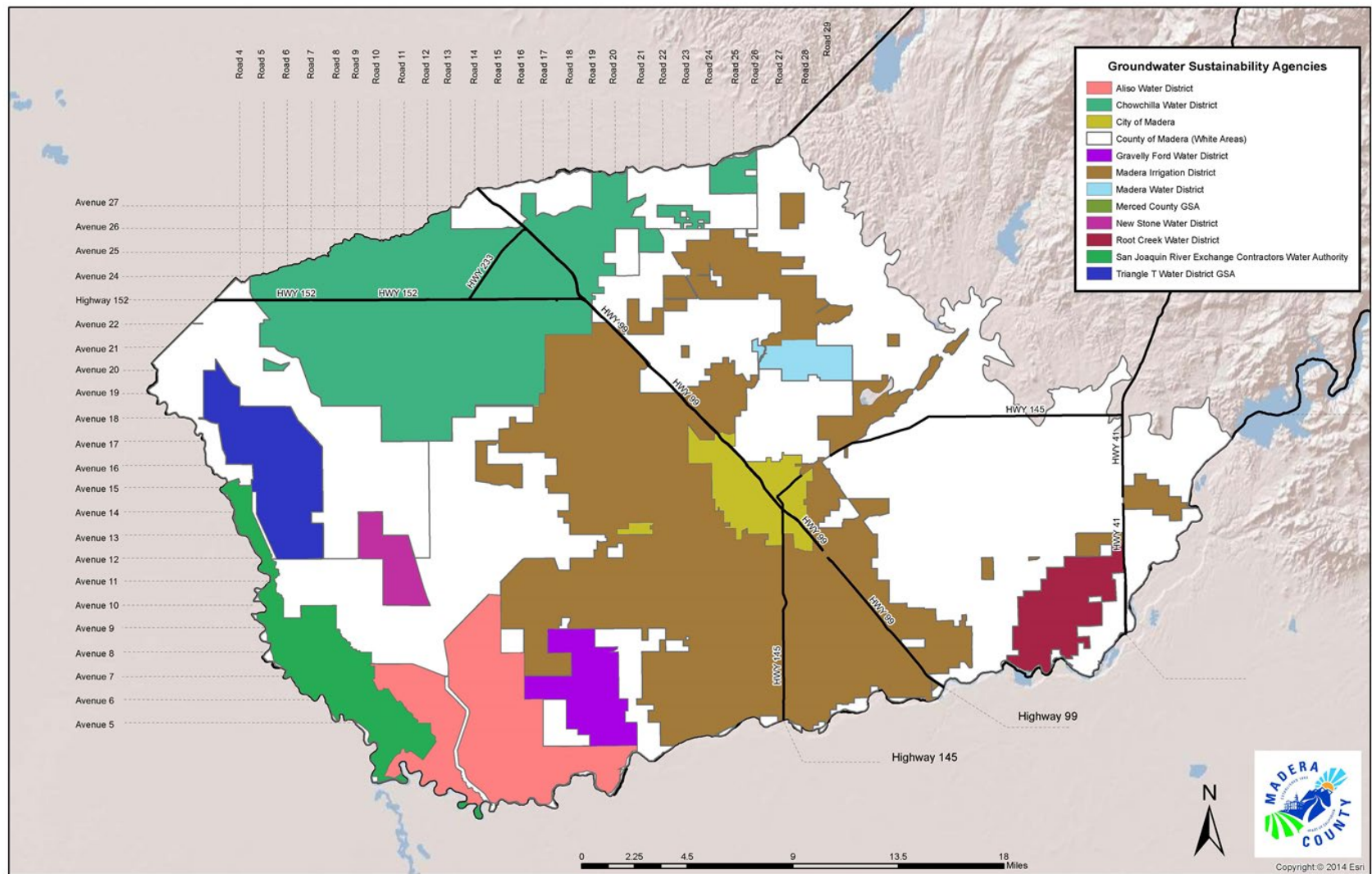
 **california
almonds**[®]
Almond Board of California

Madera County

Where is Madera County?



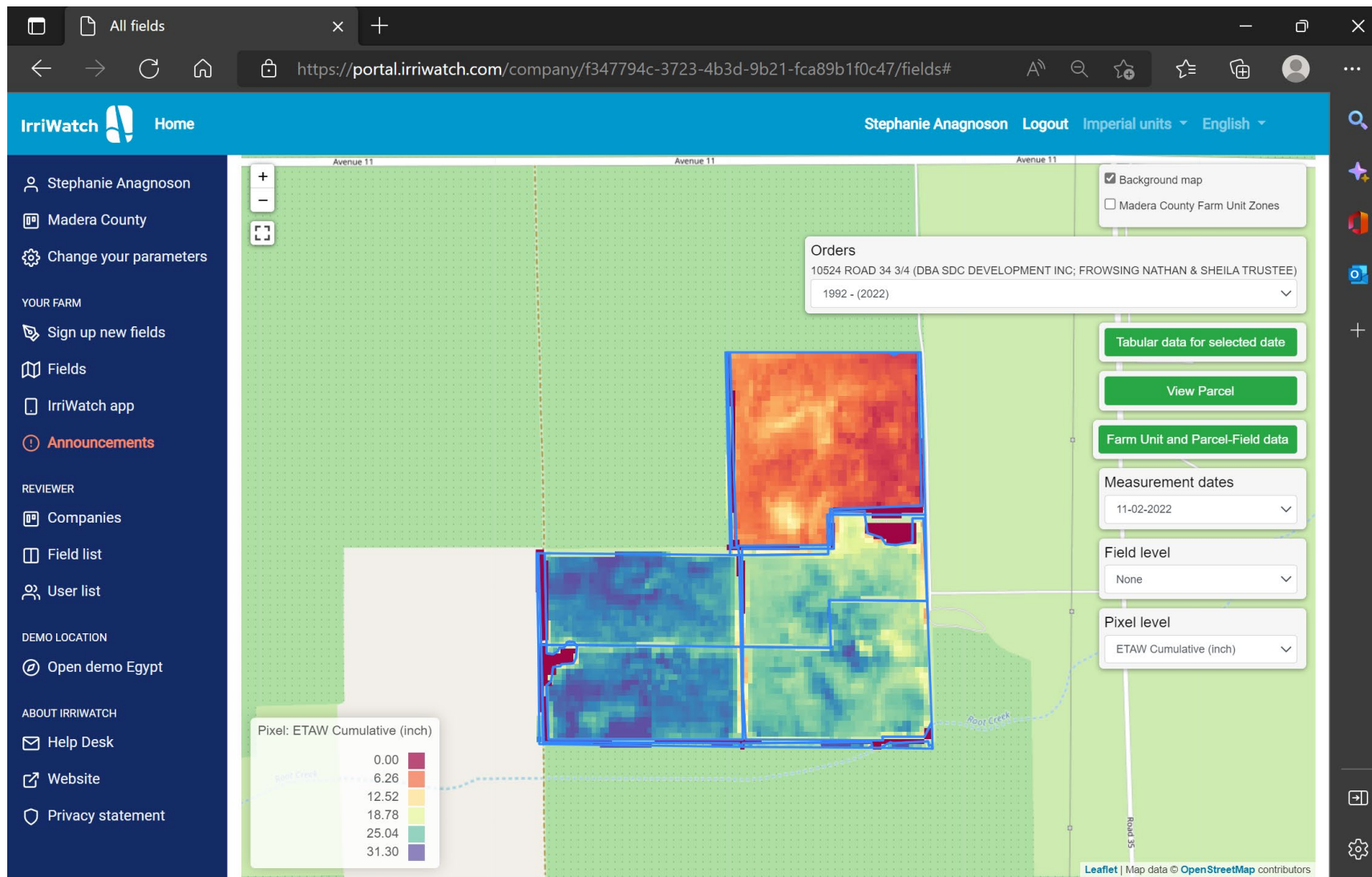
Madera County GSAs



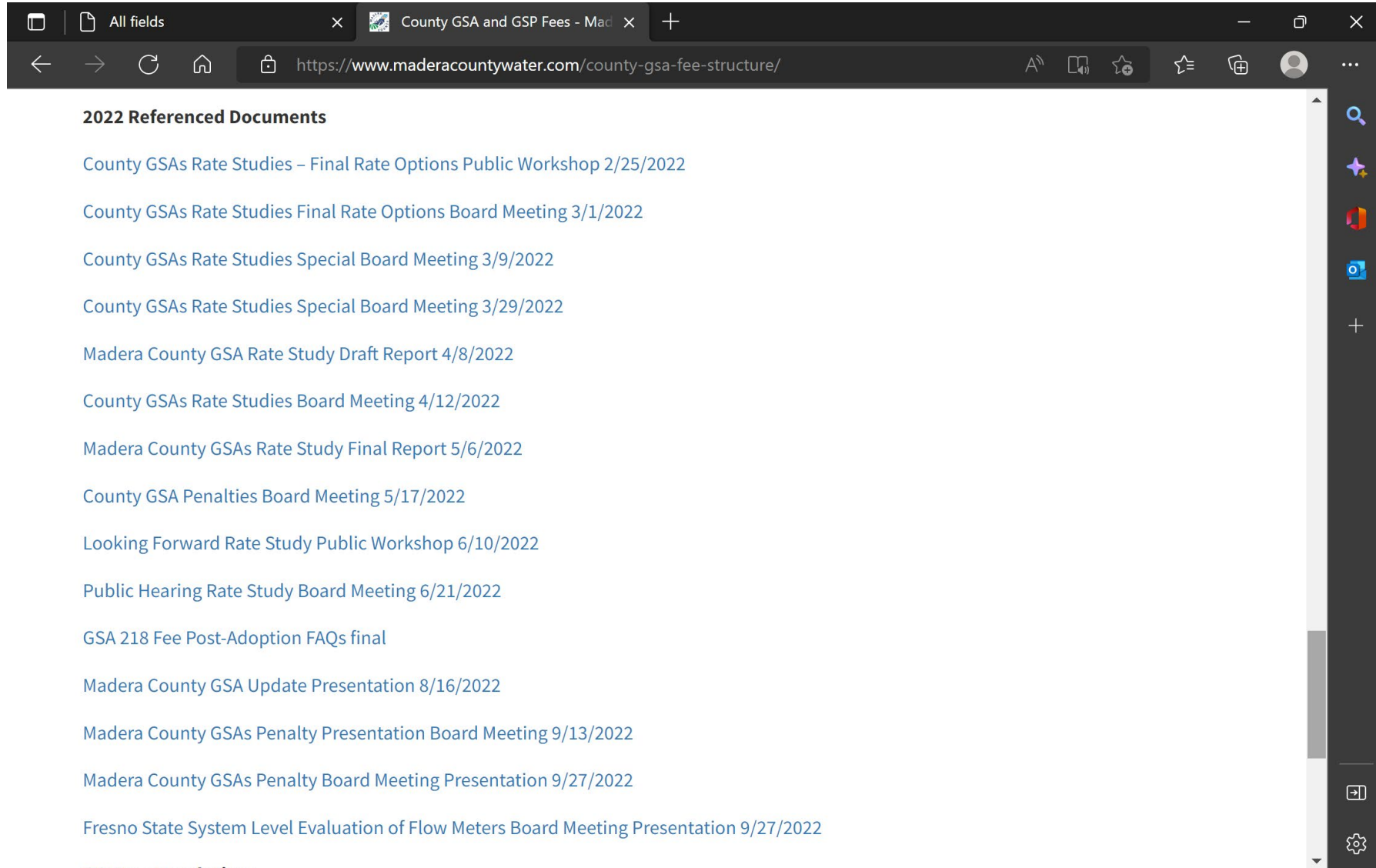
Madera County GSAs Creativity



How do you measure?



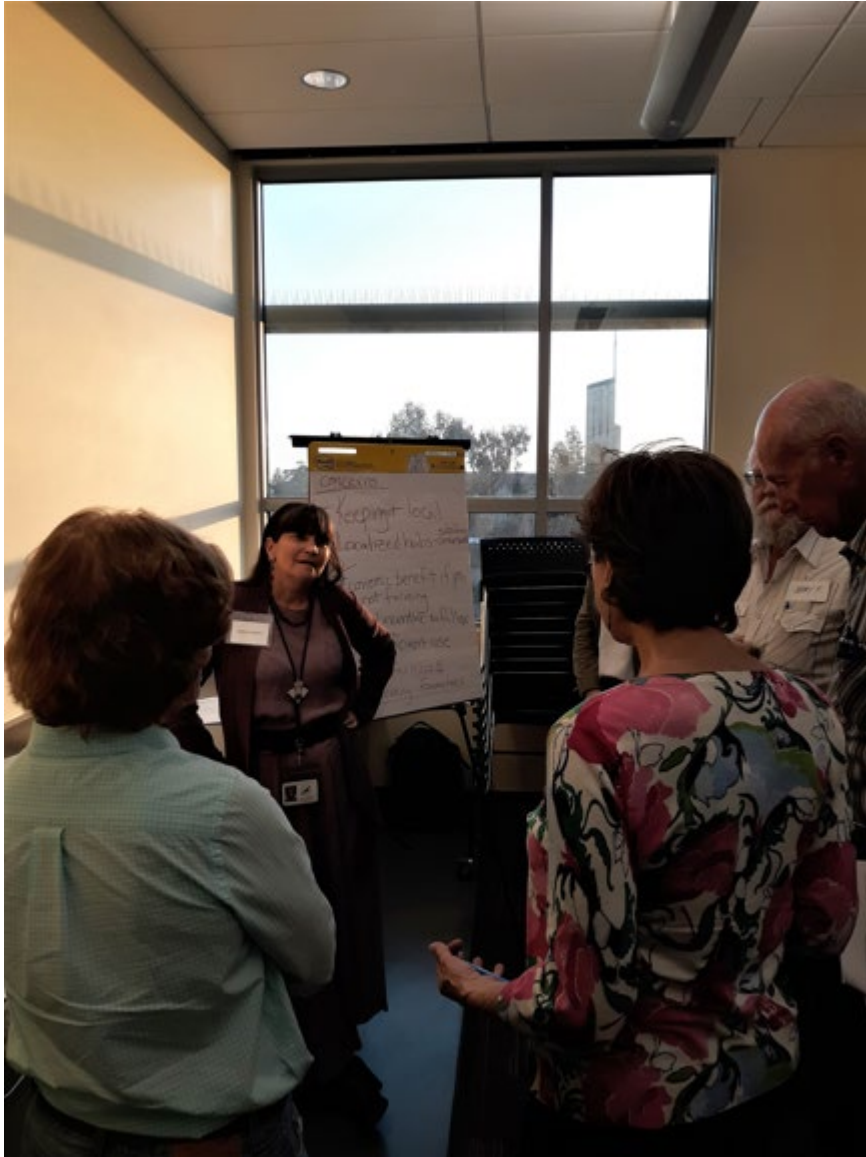
How do you do outreach?



The screenshot shows a web browser window with the following content:

- Browser tabs: All fields, County GSA and GSP Fees - Mad
- Address bar: <https://www.maderacountywater.com/county-gsa-fee-structure/>
- Section Header: **2022 Referenced Documents**
- List of documents:
 - [County GSAs Rate Studies – Final Rate Options Public Workshop 2/25/2022](#)
 - [County GSAs Rate Studies Final Rate Options Board Meeting 3/1/2022](#)
 - [County GSAs Rate Studies Special Board Meeting 3/9/2022](#)
 - [County GSAs Rate Studies Special Board Meeting 3/29/2022](#)
 - [Madera County GSA Rate Study Draft Report 4/8/2022](#)
 - [County GSAs Rate Studies Board Meeting 4/12/2022](#)
 - [Madera County GSAs Rate Study Final Report 5/6/2022](#)
 - [County GSA Penalties Board Meeting 5/17/2022](#)
 - [Looking Forward Rate Study Public Workshop 6/10/2022](#)
 - [Public Hearing Rate Study Board Meeting 6/21/2022](#)
 - [GSA 218 Fee Post-Adoption FAQs final](#)
 - [Madera County GSA Update Presentation 8/16/2022](#)
 - [Madera County GSAs Penalty Presentation Board Meeting 9/13/2022](#)
 - [Madera County GSAs Penalty Board Meeting Presentation 9/27/2022](#)
 - [Fresno State System Level Evaluation of Flow Meters Board Meeting Presentation 9/27/2022](#)

How do we manage water?



How do we address fault?



THANK YOU



THE ALMOND CONFERENCE

50
YEARS

Groundwater Recharge – *A drought adaptation*

Dec. 6, 2022 / Daniel Mountjoy



Sustainable Conservation

california
almonds[®]
Almond Board of California







What will it take to be ready to maximize recharge?

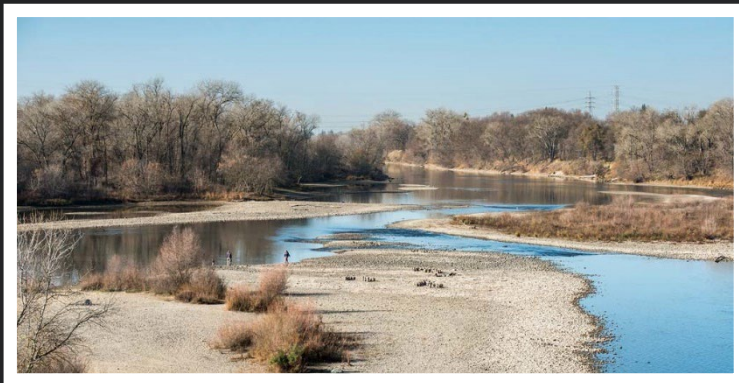
01. FARMERS AND LANDOWNERS

02. IRRIGATION DISTRICTS

03. FLOOD MANAGERS

04. GSAs

05. POLICIES AND INCENTIVES



Groundwater Recharge Assessment Tool - GRAT™

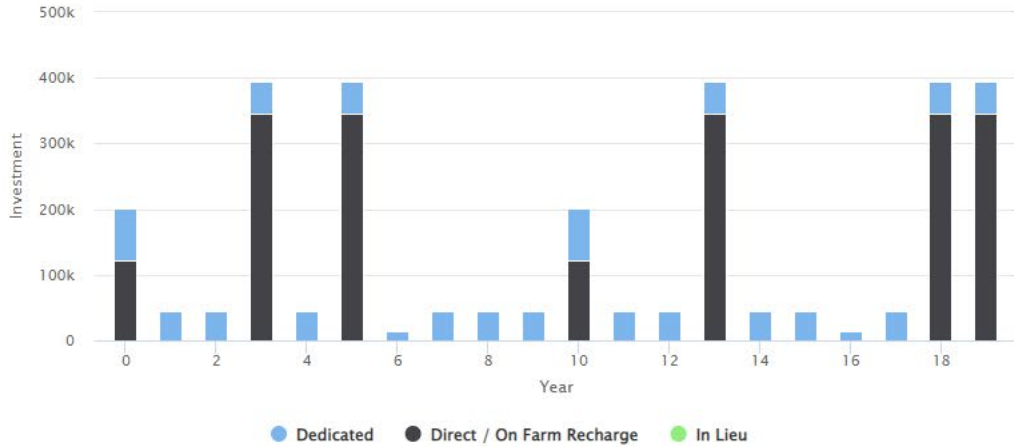
Turlock Subbasin Groundwater Recharge Assessment Tool

Find address or place



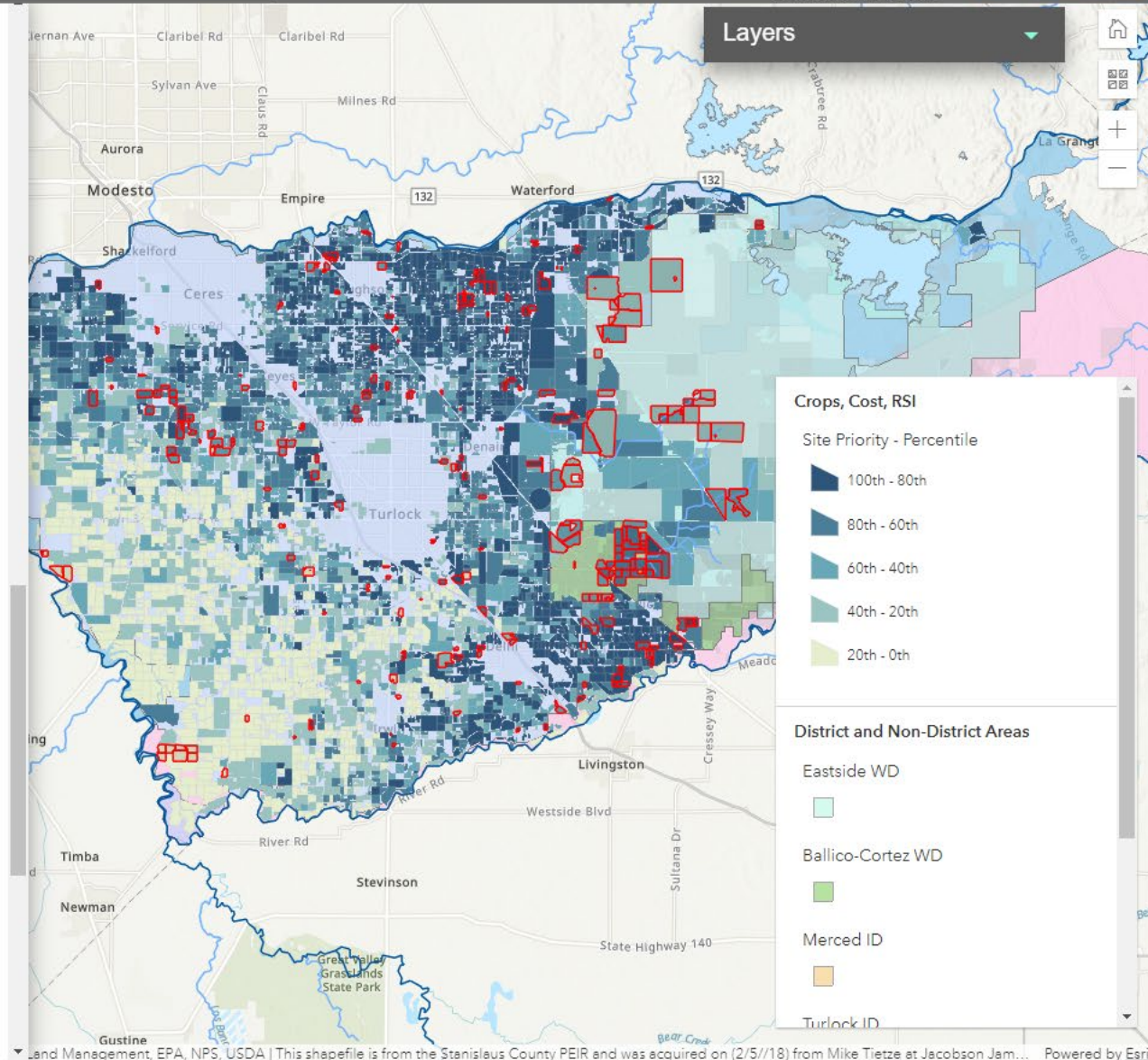
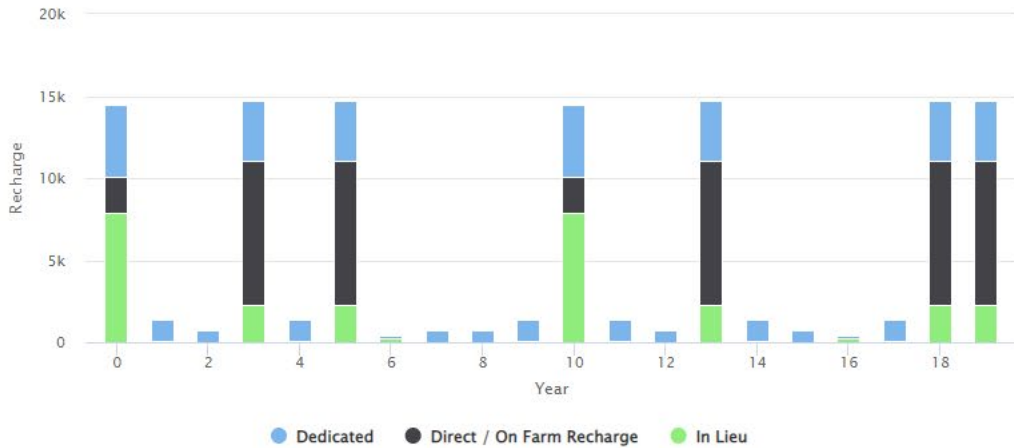
- PROJECTS
- SCENARIOS
- CRITERIA
- TARGETS
- RESULTS
- DOWNLOAD

Estimate Total Investment by Recharge Type



ALL SITES EAST WEST

Recharge by Recharge Type



Merced Flood-MAR Recharge Strategies and Projected Impacts

conveyance
expansion +
on-farm recharge



reservoir
operation +
on-farm recharge



existing
conveyance plus
on-farm recharge



31%

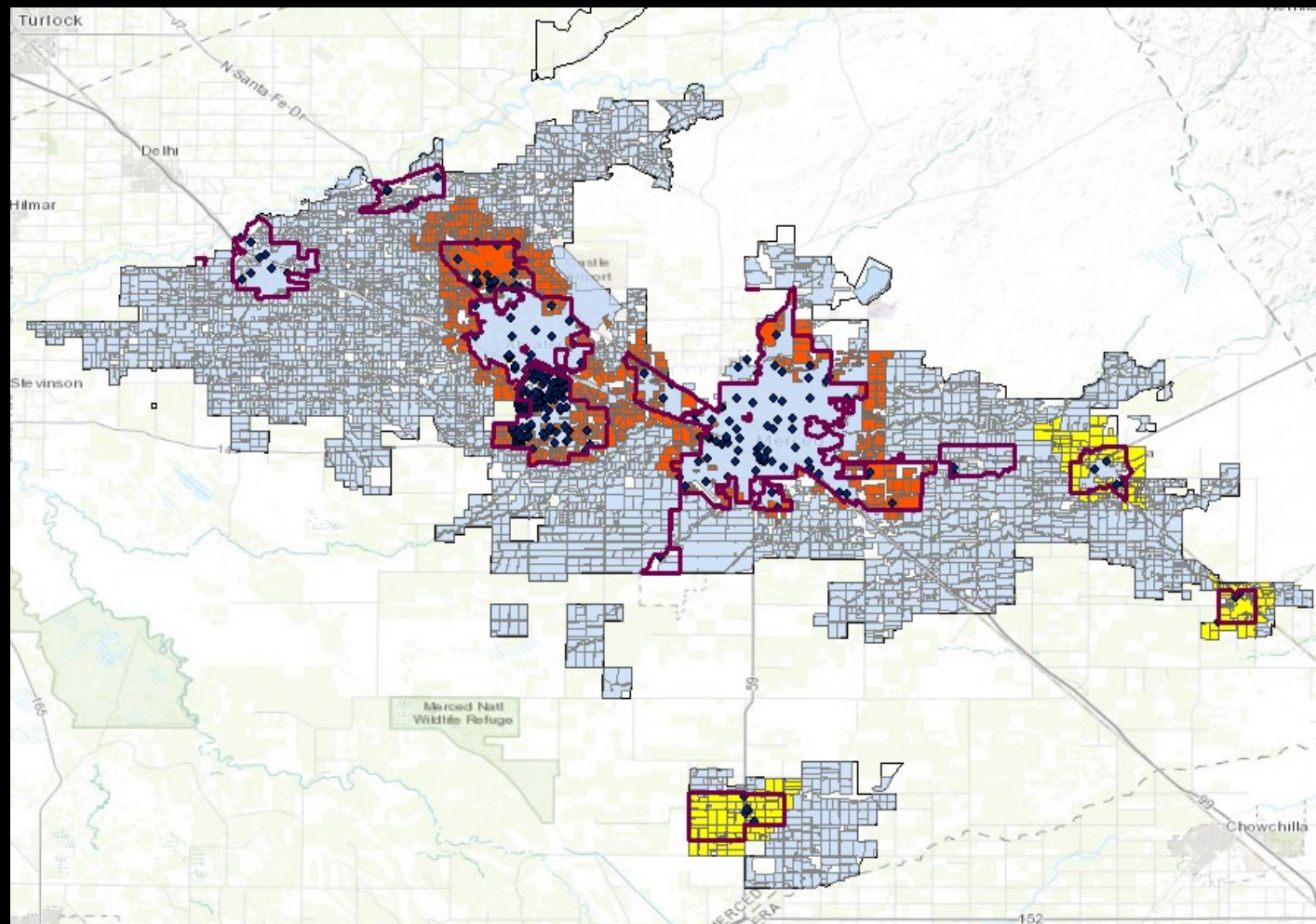
46%

63%

percent of average annual overdraft recharged

reduce flood flows by **65%**

Targeting recharge: Fields that replenish DAC drinking water wells



Opportunities to advance recharge for water supply resiliency

- 01.** Evaluate your land for recharge potential
- 02.** Discuss water availability for recharge with your irrigation district/GSA
- 03.** Explore funding incentives:
 - NRCS
 - Land Repurposing grants
 - GSA programs
- 04.** Not all sites are suitable: support regional solutions

Whole Orchard Recycling and On- Farm Recharge.

Reclaiming the Floodplains

#1 BESTSELLER

An A-Mazing Way to Deal with Change
in Your Work and in Your Life

Who M^oved My Cheese?

Spencer Johnson, M.D.

Foreword by Kenneth Blanchard, Ph.D.

coauthors of **The One Minute Manager**

The World's Most Popular Management Method



[About this book](#)

[Get Book](#)





Try to make my farm a miniature floodplain





This is the blank canvass that I now have chance to work with.



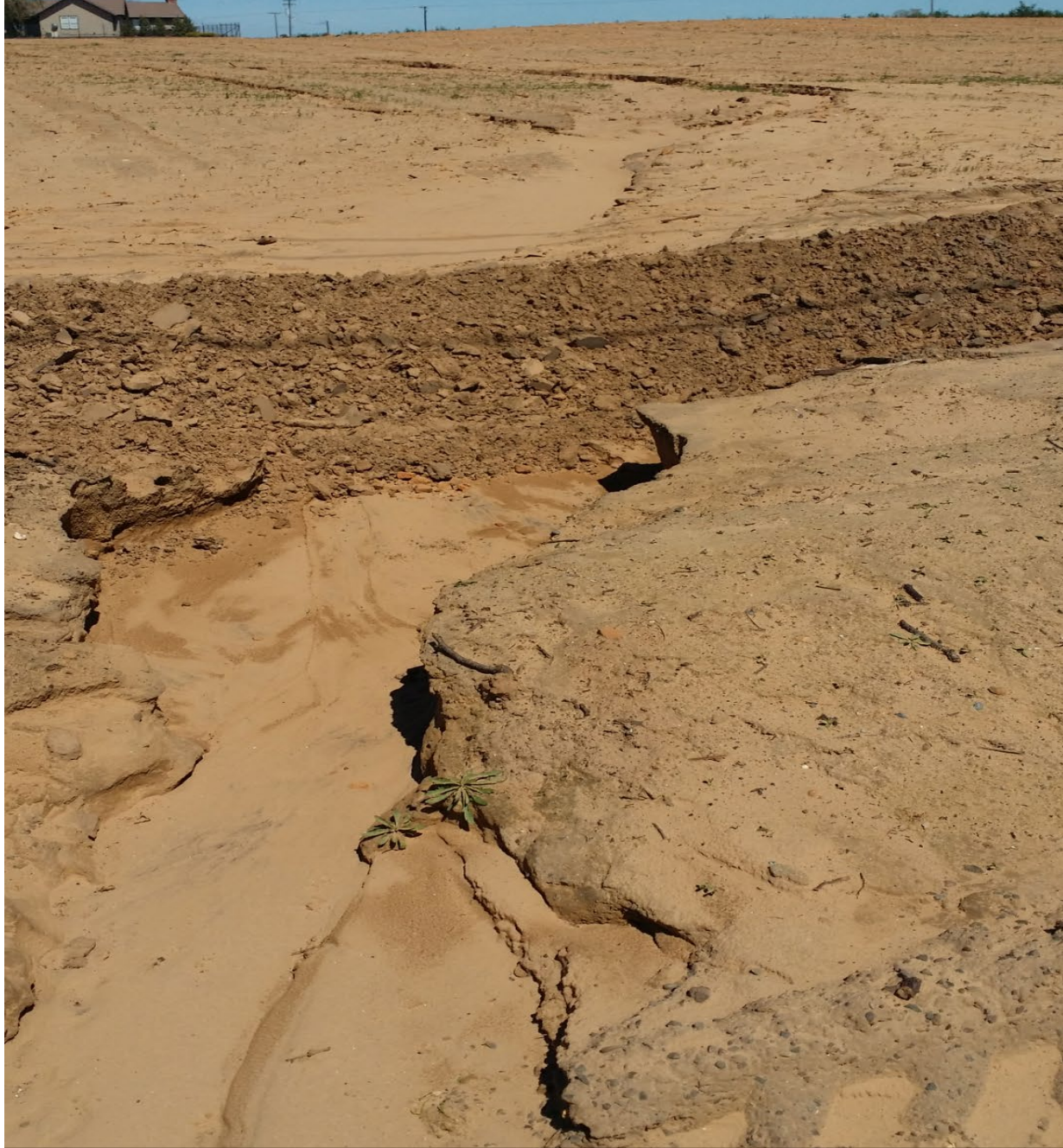








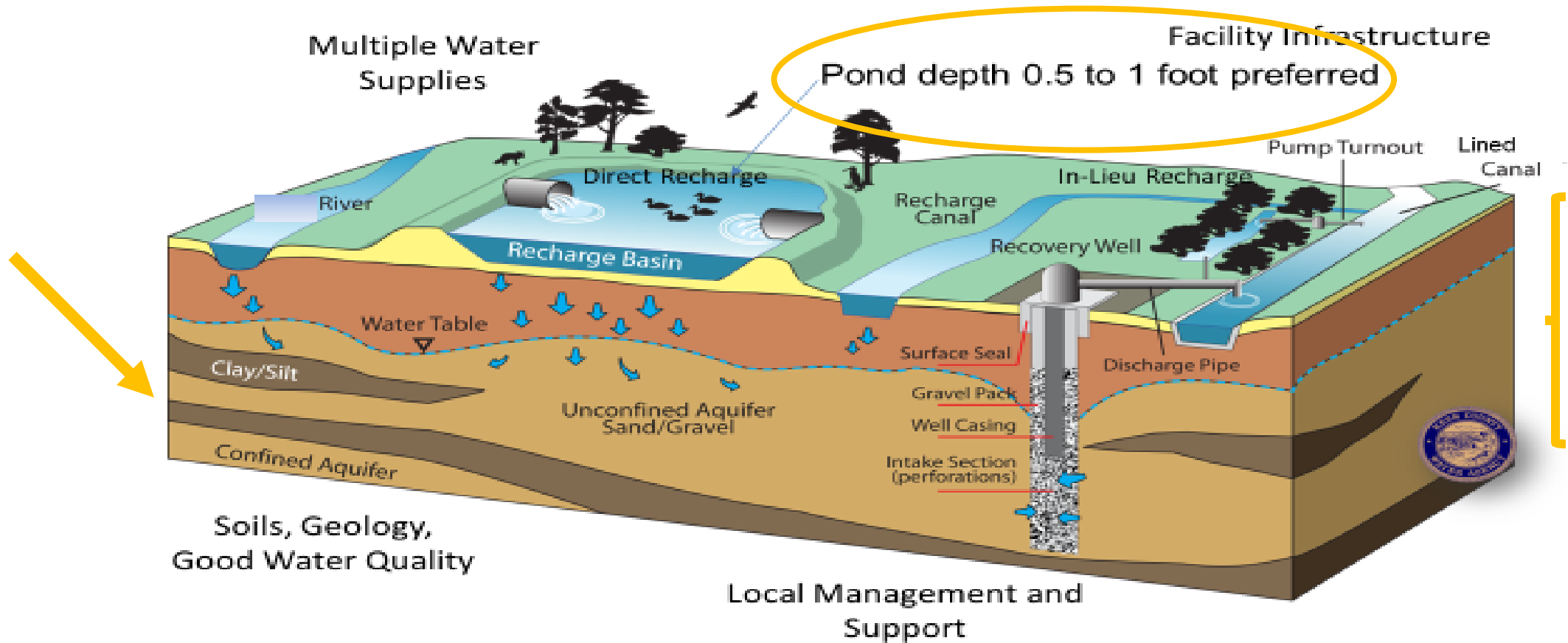






Courtesy Rick Iger

Five Keys to Success With Groundwater Banking























THANK YOU

