

Almond Board of California Disease Forecasts 2023
in cooperation with the University of California and Semios

Table 1. Daily risk assessment disease forecasts for Thur., May 11 through Thur., May 18, 2023*

| No. | County | Region | Alternaria leaf spot (date, value, level)^ | Anthracoese (date, value, level)^ | Bacterial spot (date, value, level)^ | Almond scab sporulation level (date, LW value, Precip.)^ |
|-----|------------|---------|--|-----------------------------------|---|--|
| 1 | Butte | West | 0 | 0 | 0 | 0 |
| 2 | Colusa | East | 0 | 0 | 0 | 0 |
| 3 | Fresno | Central | 0 | 0 | 0 | 0 |
| 4 | Fresno | East | 0 (7-day index=0; Season DSV=2) | 0 | 0 (5-7: Daily index 0.39; 5-12: 7-day index=0.39) | 0 |
| 5 | Fresno | West | 0 | 0 | 0 | 0 |
| 6 | Kern | Central | 0 | 0 | 0 | 0 |
| 7 | Kern | East | 0 (7-day index=0; Season DSV=1) | 0 | 0 | 0 |
| 8 | Kern | West | 0 | 0 | 0 | 0 |
| 9 | Madera | Central | 0 (7-day index=0; Season DSV=1) | 0 | 0 (5-10: 7-day index=0.07) | 0 |
| 10 | Merced | Central | 0 | 0 | 0 | 0 |
| 11 | Stanislaus | Central | 0 | 0 | 0 (5-11 to 5-12: 7-day index=0.03) | 0 |
| 12 | Stanislaus | East | 0 | 0 | 0 (5-11 to 5-12: 7-day index=0.02) | 0 |
| 13 | Stanislaus | West | 0 | 0 (21-day risk index=0.07) | 0 (5-11 to 5-12: 7-day index=0.02) | 0 |

* - 7-day forecasts are based on temperature (inside- and outside-canopy measurements), precipitation, and leaf wetness which are powered by the Semios® precision farming platform.

^ - Numerical risk is scaled as follows: 0 = no risk, 1 = action threshold (Note: values may exceed 1 due to hourly accumulations).

Industry Advisory - Summary for Selected Almond Growing Regions

Some precipitation and accumulated hours of leaf wetness in many regions last week resulted some scab sporulation risk in Butte-W / Colusa-E with ≥ 40 h LW and 15.67 to 44.07 mm precipitation; Stanislaus-C,-E,-W/Merced-C /Madera-C with 20 to 37 h LW and 10.73 to 11.66 mm precipitation; and Fresno-C,-E,-W with 14 to 28 h LW and 3.16 to 11.73 mm precipitation. Average in-canopy temperatures were cool (15 C) during the wet conditions last week across all of the regions. In the coming week, no rainfall and moderate temperatures (Table 2) are predicted that will result in zero risk for Alternaria leaf spot, anthracnose, bacterial spot, and scab sporulation in all regions. As temperatures warm during the day and cool at night in the coming week will result in leaf wetness for Stanislaus-E. Again, the risk for these diseases is low because repeated rains and and warm temperatures are needed to initiate disease epidemics. A summary of selected forecasted environment conditions in the coming week are shown in Table 2.

The website <https://www.ag-radar.com> (password: Almondboard2022) displays actual and forecasted disease risk assessments for each region. Because these are regional forecasts, actual and predicted precipitation may vary among locations within each region. Additionally, historical records and experience for specific locations should be considered. This advisory will be updated weekly. The website "2022 Fungicide Efficacy Tables" is available to optimize fungicide selection and applications (<http://ipm.ucanr.edu/PDF/PMG/fungicideefficacytiming.pdf>).

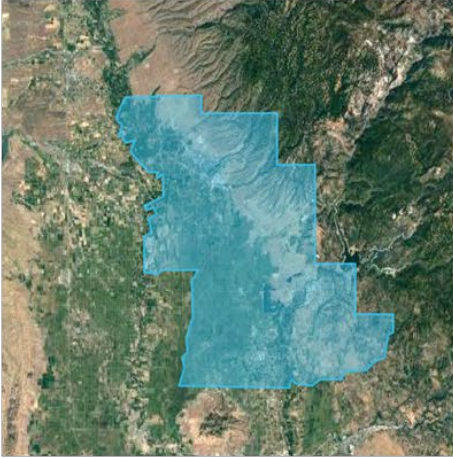
Table 2. Forecasted weather for Thur., May 11 through Thursday, May 18, 2023*

| No. | County | Region | Date | Avg Temp (in canopy) °C | Avg Humidity (%) | Precip. (mm) | Leaf Wetness (hours/day) |
|-----|------------|---------|--------------|-------------------------|------------------|--------------|--------------------------|
| 1 | Butte | West | 5-11 to 5-18 | 17.2 to 26.7 | 33.1 to 60.5 | 0 | 0 |
| 2 | Colusa | East | 5-11 to 5-18 | 17.9 to 26.3 | 36.4 to 59.6 | 0 | 0 |
| 3 | Fresno | Central | 5-11 to 5-18 | 17.7 to 27.5 | 34.3 to 55.1 | 0 | 0 |
| 4 | Fresno | East | 5-11 to 5-18 | 18.1 to 27.6 | 38.2 to 56.8 | 0 | 0 |
| 5 | Fresno | West | 5-11 to 5-18 | 16.9 to 25.3 | 30.3 to 54.4 | 0 | 0 |
| 6 | Kern | Central | 5-11 to 5-18 | 16.7 to 27.9 | 31.6 to 60.8 | 0 | 0 |
| 7 | Kern | East | 5-11 to 5-18 | 17.6 to 28.3 | 35.0 to 60.4 | 0 | 0 |
| 8 | Kern | West | 5-11 to 5-18 | 18.4 to 28.3 | 31.4 to 52.3 | 0 | 0 |
| 9 | Madera | Central | 5-11 to 5-18 | 17.1 to 26.7 | 36.8 to 58.3 | 0 | 0 |
| 10 | Merced | Central | 5-11 to 5-18 | 17.6 to 26.2 | 39.8 to 58.6 | 0 | 0 |
| 11 | Stanislaus | Central | 5-11 to 5-18 | 16.3 to 25.5 | 43.2 to 60.0 | 0 | 0 |
| 12 | Stanislaus | East | 5-11 to 5-18 | 15.7 to 25.8 | 44.0 to 65.5 | 0 | <1 (5-11: 5 h) |
| 13 | Stanislaus | West | 5-11 to 5-18 | 15.8 to 26.1 | 40.2 to 66.6 | 0 | 0 |

Note: In this table, the order of some regions is the same as table 1 and was generated using the RADAR on-line forecasted report powered by the Semios® precision farming platform.

Fig. 1. Maps of counties and regions.

Butte West



Colusa East



Fresno Central



Fresno East



Fresno West



Fig. 2. Maps of counties and regions.

Kern West



Kern East



Kern Central



Stanislaus Central



Stanislaus East



Stanislaus West

