

Almond Board of California Disease Forecasts 2023
in cooperation with the University of California and Semios

Table 1. Daily risk assessment disease forecasts for Thur., May 18 through Wed., May 24, 2023*

No.	County	Region	Alternaria leaf spot daily value (date, index) level [^]	Anthracnose (date, value, level) [^]	Bacterial spot (date, value, level) [^]	Almond scab sporulation level (date, LW value, Precip.) [^]
1	Butte	West	0	0	0	0
2	Colusa	East	0	0	0	0
3	Fresno	Central	0 (7-day index=1; Season DSV=1); Very low	0	0	0
4	Fresno	East	0 (7-day index=1-2; Season DSV=4); Very low	0	0	0
5	Fresno	West	0	0	0	0
6	Kern	Central	0 (7-day index=0; Season DSV=2); Very low	0	0	0
7	Kern	East	0 (5-17 to 5-22; 7-day index=3 to 12; Season DSV=13) High	0	0	0
8	Kern	West	0	0	0	0
9	Madera	Central	0 (7-day index=0; Season DSV=3); Low	0	0	0
10	Merced	Central	0	0	0	0
11	Stanislaus	Central	0	0	0	0
12	Stanislaus	East	0	0	0	0
13	Stanislaus	West	0	0	0	0

* - 7-day forecasts are based on temperature (inside- and outside-canopy measurements), precipitation, and leaf wetness which are powered by the Semios® precision farming platform.

[^] - Numerical risk is scaled as follows: 0 = no risk, 1 = action threshold (Note: values may exceed 1 due to hourly accumulations).

Industry Advisory - Summary for Selected Almond Growing Regions

Some accumulated hours of leaf wetness in several regions last week resulted some scab sporulation risk in Butte-W with ≤ 7 h LW; Fresno-C,-E with 26-48 h LW; Kern-E with 81 h LW; Madera-C with 33 h LW; and Stanislaus-C with 4 h LW. Average in-canopy temperatures were moderate (18-24 C) last week across all of the regions. In the coming week, no rainfall, low leaf wetness, and moderate temperatures (Table 2) are predicted that will result in zero risk for Alternaria leaf spot, anthracnose, bacterial spot, and scab sporulation in all regions. As temperatures warm during the day and cool at night this time of year, leaf wetness can result especially with extreme daily temperatures, and this is difficult to predict. This is what happened last week in Kern-E: although the forecast was low, accumulated LW was 81 h which set off the DSV for the 7-day index to level 12. This indicates that an application of a fungicide for Alternaria leaf spot is warranted in the coming week in Kern-E. The risk for Alternaria leaf spot in other locations and for the other diseases in all locations is forecasted to be low or very low in the coming week because precipitation, long durations of leaf wetness, and warm temperatures are not predicted that are needed to initiate disease epidemics. A summary of selected forecasted environmental conditions in the coming week are shown in Table 2.

The website <https://www.ag-radar.com> (password: Almondboard2022) displays actual and forecasted disease risk assessments for each region. Because these are regional forecasts, actual and predicted precipitation may vary among locations within each region. Additionally, historical records and experience for specific locations should be considered. This advisory will be updated weekly. The website "2022 Fungicide Efficacy Tables" is available to optimize fungicide selection and applications (<http://ipm.ucanr.edu/PDF/PMG/fungicideefficacytiming.pdf>).

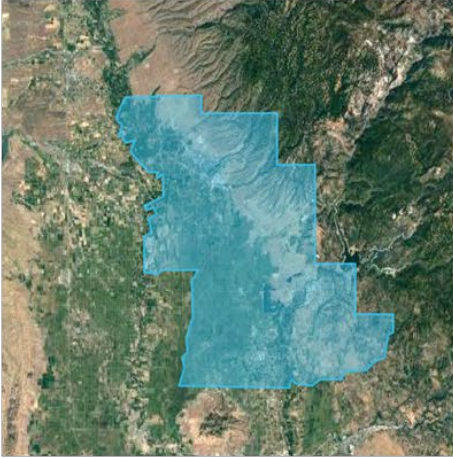
Table 2. Forecasted weather for Thur., May 18 through Wednesday, May 24, 2023*

No.	County	Region	Date	Avg Temp (in canopy) °C	Avg Humidity (%)	Precip. (mm)	Leaf Wetness (hours/day)
1	Butte	West	5-18 to 5-24	22.4 to 26.7	36.0 to 56.0	0	0
2	Colusa	East	5-18 to 5-24	21.3 to 26.4	39.6 to 54.8	0	<1 (5-17: 1 h)
3	Fresno	Central	5-18 to 5-24	23.5 to 26.3	36.4 to 48.9	0	0
4	Fresno	East	5-18 to 5-24	24.0 to 26.6	40.0 to 49.5	0	0
5	Fresno	West	5-18 to 5-24	21.5 to 24.8	27.8 to 37.4	0	0
6	Kern	Central	5-18 to 5-24	23.6 to 26.6	34.5 to 48.0	0	0
7	Kern	East	5-18 to 5-24	24.9 to 27.5	32.5 to 50.7	0	0
8	Kern	West	5-18 to 5-24	23.4 to 27.9	27.9 to 44.7	0	0
9	Madera	Central	5-18 to 5-24	22.7 to 25.7	39.9 to 47.8	0	0
10	Merced	Central	5-18 to 5-24	21.7 to 25.9	42.8 to 48.3	0	0
11	Stanislaus	Central	5-18 to 5-24	21.3 to 24.2	46.4 to 51.7	0	0
12	Stanislaus	East	5-18 to 5-24	21.0 to 24.4	46.5 to 55.3	0	0
13	Stanislaus	West	5-18 to 5-24	20.4 to 24.2	44.2 to 52.2	0	0

Note: In this table, the order of some regions is the same as table 1 and was generated using the RADAR on-line forecasted report powered by the Semios® precision farming platform.

Fig. 1. Maps of counties and regions.

Butte West



Colusa East



Fresno Central



Fresno East



Fresno West



Fig. 2. Maps of counties and regions.

Kern West



Kern East



Kern Central



Stanislaus Central



Stanislaus East



Stanislaus West

