



Thomas Iseman,
U.S. Department of the Interior

Management of Western Water Resources: Present Complexities and Future Realities

The Almond Conference
Almond Board of California

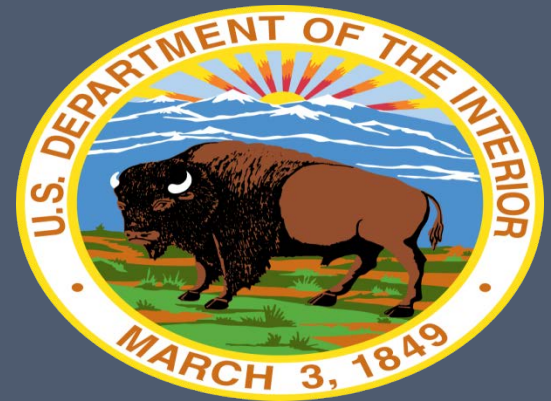
December 10, 2015

Sacramento, California

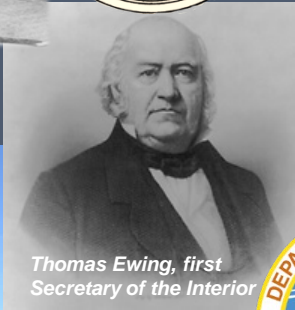
Thomas M. Iseman

Deputy Assistant Secretary for Water & Science

Department of the Interior



Department of the Interior



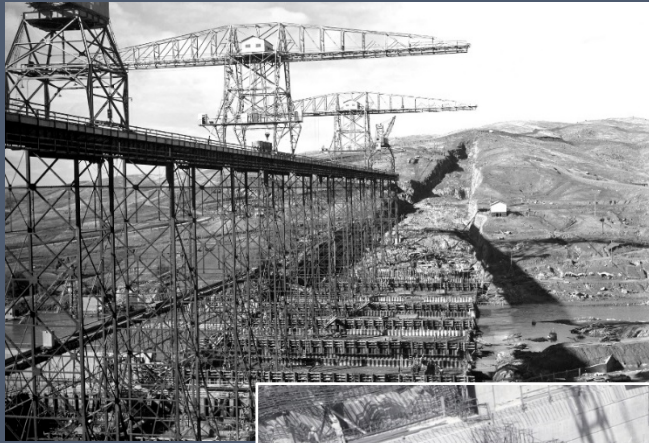
Thomas Ewing, first Secretary of the Interior



Bureau of Reclamation



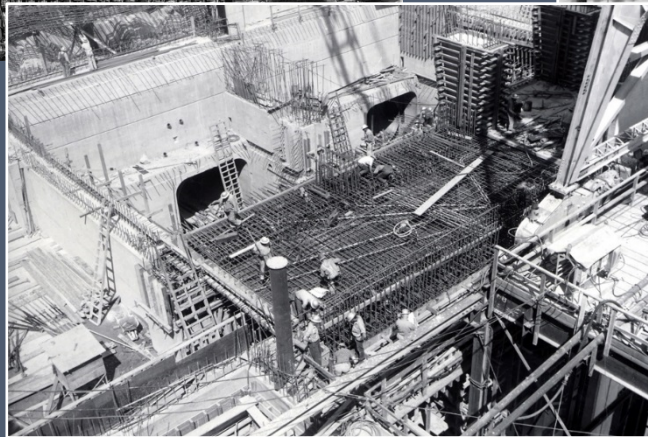
Aging Infrastructure



Friant, 1941



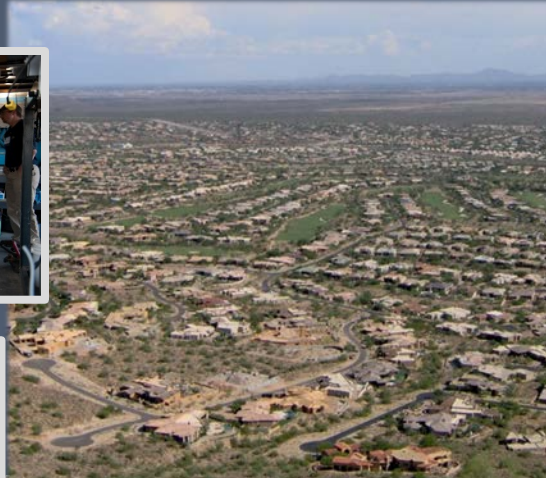
Shasta, 1940



Folsom, 1954



Increasing & Changing Demands



Steve Corey, Flickr



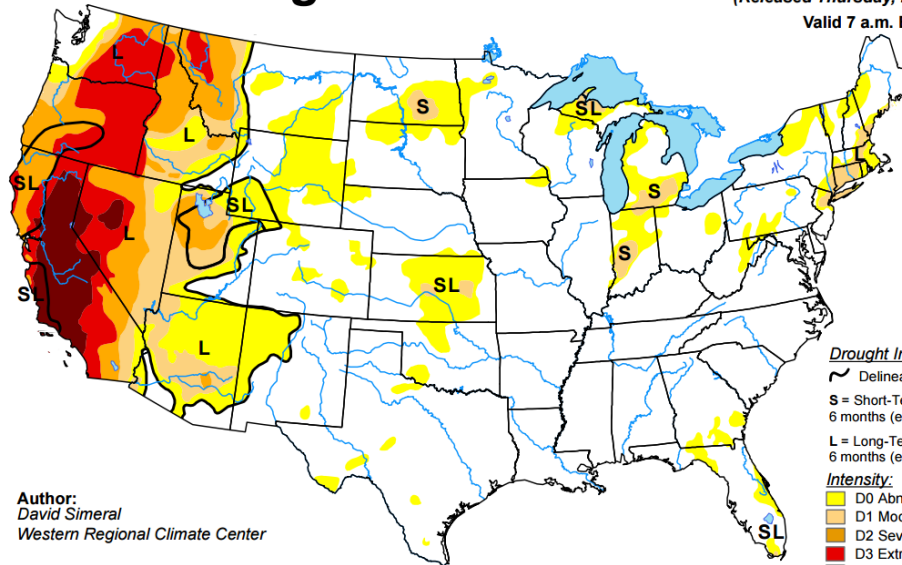
Climate Variability

U.S. Drought Monitor

December 1, 2015

(Released Thursday, Dec. 3, 2015)

Valid 7 a.m. EST



Author:
David Simeral
Western Regional Climate Center

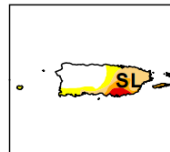
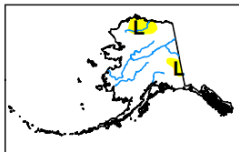
Drought Impact Types:

- ~ Delineates dominant impacts
- S** = Short-Term, typically less than 6 months (e.g. agriculture, grasslands)
- L** = Long-Term, typically greater than 6 months (e.g. hydrology, ecology)

Intensity:

- D0** Abnormally Dry
- D1** Moderate Drought
- D2** Severe Drought
- D3** Extreme Drought
- D4** Exceptional Drought

The Drought Monitor focuses on broad-scale conditions. Local conditions may vary. See accompanying text summary for forecast statements.



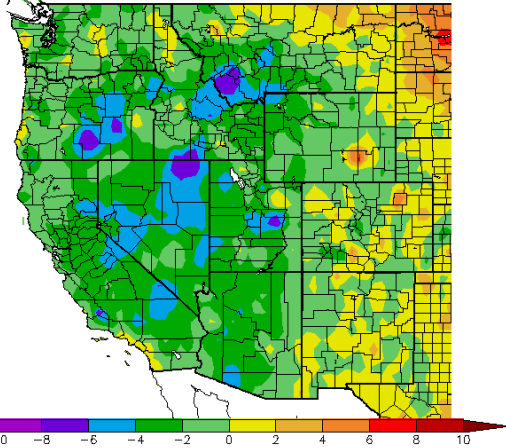
<http://droughtmonitor.unl.edu/>





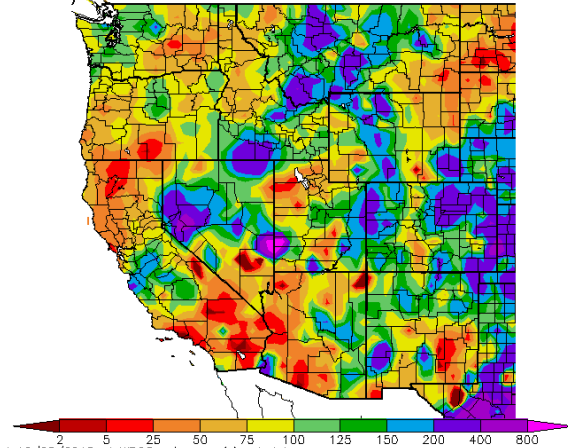
Recent California Climate

Ave. Temperature dep from Ave (deg F)
11/2/2015 - 12/1/2015



Generated 12/02/2015 at WRCC using provisional data.
NOAA Regional Climate Centers

Percent of Average Precipitation (%)
11/2/2015 - 12/1/2015



Generated 12/02/2015 at WRCC using provisional data.
NOAA Regional Climate Centers





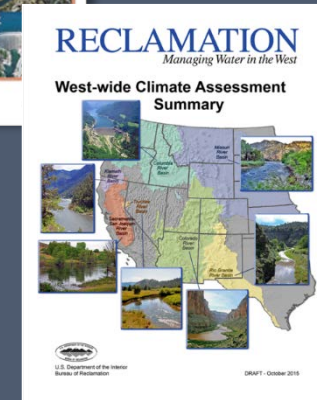
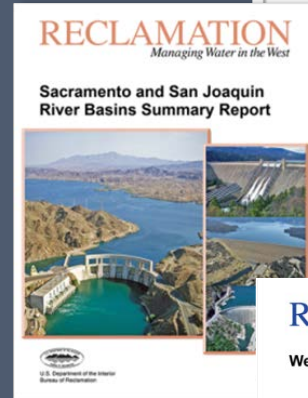
Folsom Lake - January 16, 2014



Addressing the Challenges

Through Planning:

- President's Climate Action Plan
- Reclamation's West-wide Climate Strategy
 - WaterSMART
 - Basin Studies
 - West-wide Climate Risk Assessments
- SECURE Report



Addressing the Challenges

Through Investing:





Addressing the Challenges

Through Partnerships:

- National Drought Resilience Partnership
<http://www.drought.gov/drought/content/ndrp>
- Western Watershed Enhancement Partnership
- Reclamation Drought Response Program



Locally Led Partnerships, Innovation, & Solutions





