



What's Coming from Sacramento?

December 6, 2016



What's Coming from Sacramento?

Kelly Covello, Almond Alliance of California
(Moderator)

Dennis Albani, California Advocates, Inc.

Brian Dahle, California State Assembly





**Kelly Covello,
Almond Alliance of California**



Almond Alliance
OF CALIFORNIA

What's Coming From Sacramento?

Kelly Covello, President, Almond Alliance
Dennis Albiani, California Advocates
Assemblymember, Brian Dahle

Who is the Almond Alliance?



Almond Alliance
OF CALIFORNIA

Almond Alliance of California

- Established in 1980 and is the only trade association uniquely and singularly focused on the California almond industry
- Represent almond growers, hullers, shellers, processors and allied industry members
- Governed by a 9 member Board of Directors and have a number of committees assembled on an as needed basis
- Membership is voluntary and the association is funded by dues. Our current handler membership represents 80% of the almonds processed in California
- Lobby and advocate and provide other services including technical assistance, training, insurance benefits, and group benefits

Value Proposition



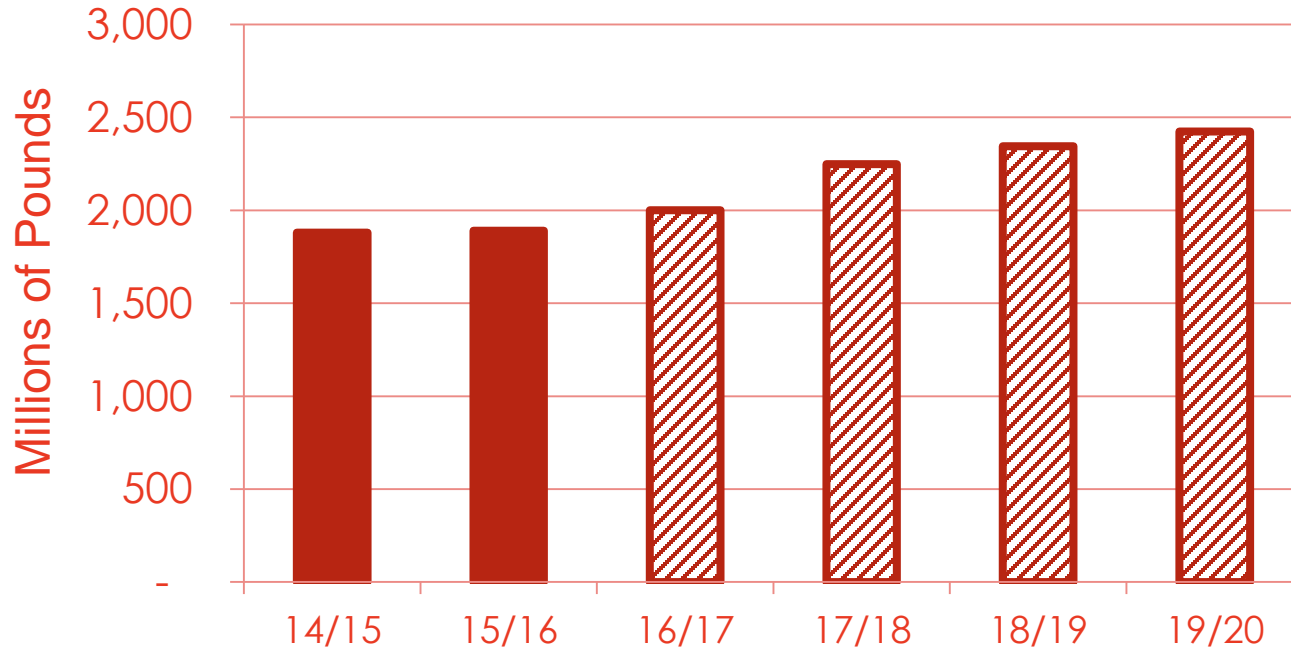
The only trade association
fully dedicated to
advocating and protecting
your investment in the
almond industry

Partnering With the Almond Board

Complementing...Not Competing

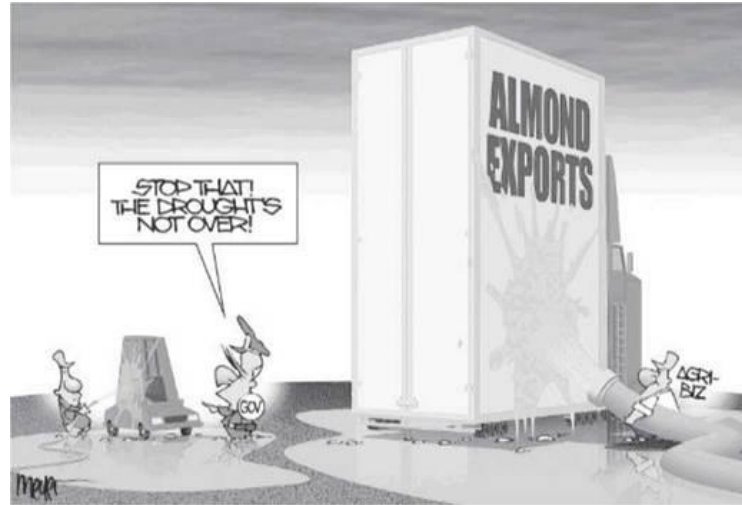
	 California almonds SM Almond Board of California	 Almond Alliance OF CALIFORNIA
Research	● ● ●	
Advertising/ Promotion	● ● ●	
Statistical Analysis	● ● ●	
Public, Media Relations	● ● ●	●
Technical Assistance	● ●	● ●
Training	● ●	● ●
Advocacy		● ● ●
Group Benefits		● ●

Production Expected to Increase by 30% by 2020



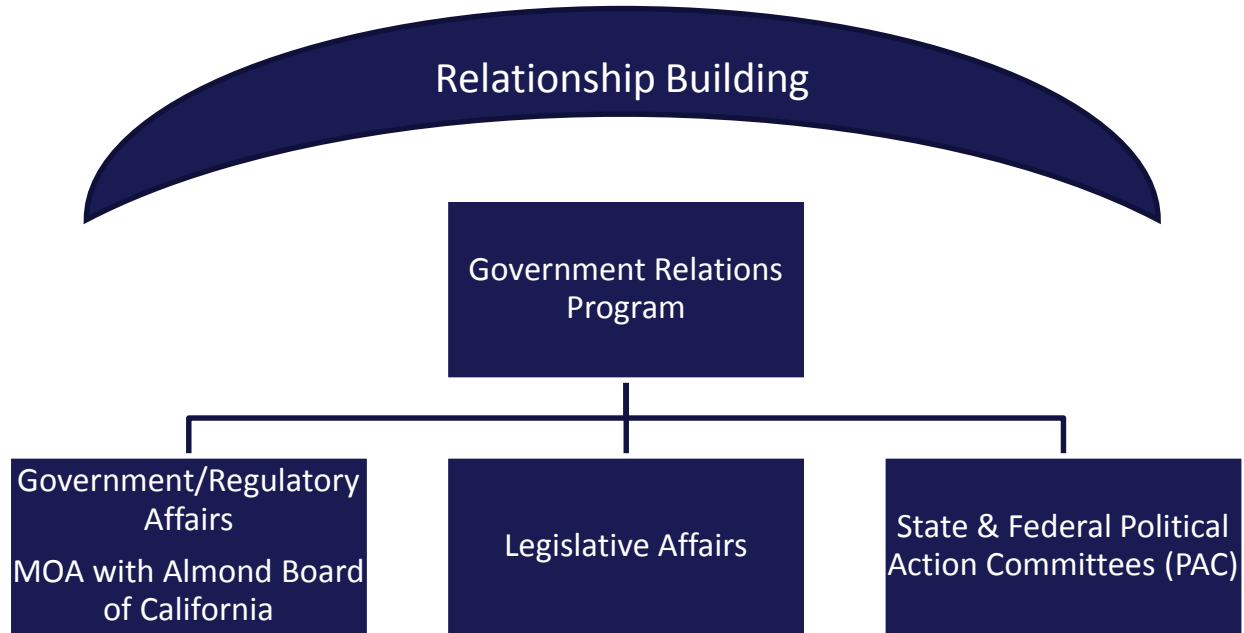
*NOTE: Production Outlook assumes adequate moisture. Though, research is being done to understand how to maximize yields given lower levels of water availability.

Planning for...vs Reacting to



Despite its numerous contributions to local communities and the state's economy, the industry is faced with increasing concerns about both its ability and right to farm.

If You're Not at the Table, You're on the Menu



Legislative Update

Dennis Albiani,
California Advocates



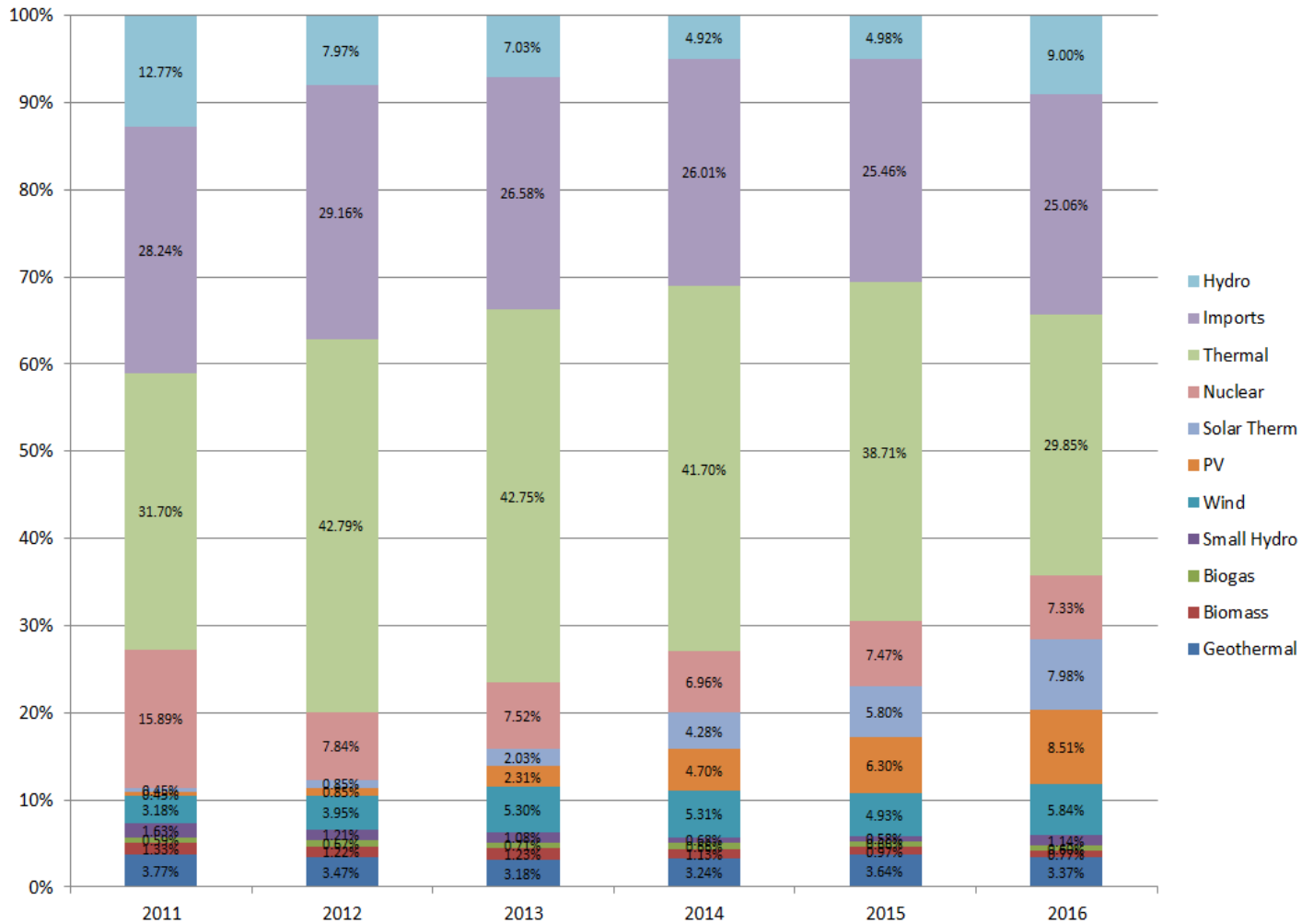
Legislative Issues

- 2016 Most Challenging Year
 - Overtime
 - Minimum Wage
 - SB 32/SB 1383
- 2017
 - Strong Economy and Passing of Prop 55 – Budget is strong
 - 2/3 Both Houses
 - Simple Majority for Budget
 - Clean up for Overtime
 - Attack on Food
 - Labeling, Packaging, Taxes on sugar content – are there opportunities?
 - Additional Climate Legislation
 - Pesticides – Legislative Restrictions, Regulatory Restrictions

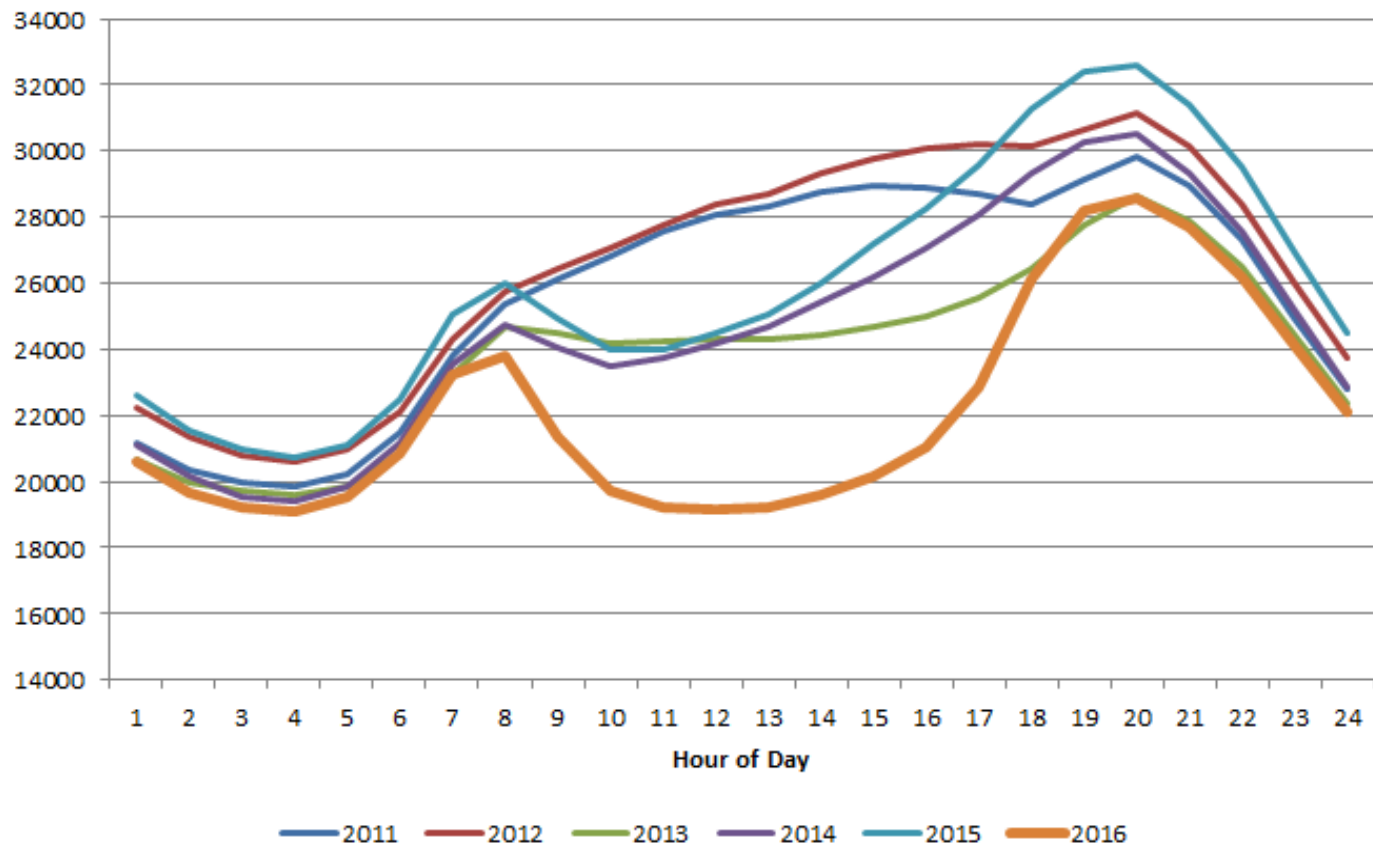
Pending Water Issues

- Instream Flows – How much water stays in stream for environmental purposes
- CA Water Fix – Tunnels – how big, environmental mitigation, federal fisheries agencies
- SGMA Implementation
- Water Rights System Reform
- Continued Enviro Opposition to Desal, Recycled Water, Reclaimed oil water
- Drought Response – Process Water
- Global Warming – Water/Energy Nexus

Resource Mix by Year



October Weekday Average Net Load Profile



Legislative Update

Assemblymember Brian Dahle



DPR Proposal on Pesticide Use Near Schools/Day Care Centers

- DPR proposal to not allow certain pesticides and application methods used within ¼ mile of a school or day care/nursery M-F 6am to 6pm
- Fumigants can't be applied when school classes are scheduled/day cares open within 36hours following fumigation
 - No science based or risk based reason for this new regulation
- Comments/posts cards due December 9th. Visit Booth #929 for post cards.



2016 Advocacy Report



Thank You!

Almond Alliance of California
1211 L Street
Modesto CA 95354
www.almondalliance.org
T: 209-300-4170
staff@almondalliance.org



A close-up photograph of a glass jar filled with almonds. In the foreground, a small white dish contains a dollop of almond butter. The background is a warm, golden-yellow color.

Questions?